

BUFFALO & ERIE COUNTY PUBLIC LIBRARY

IF THE 2006 LIBRARY TAX LEVY IS THE SAME AS 2005, WHY DID LIBRARIES CLOSE??

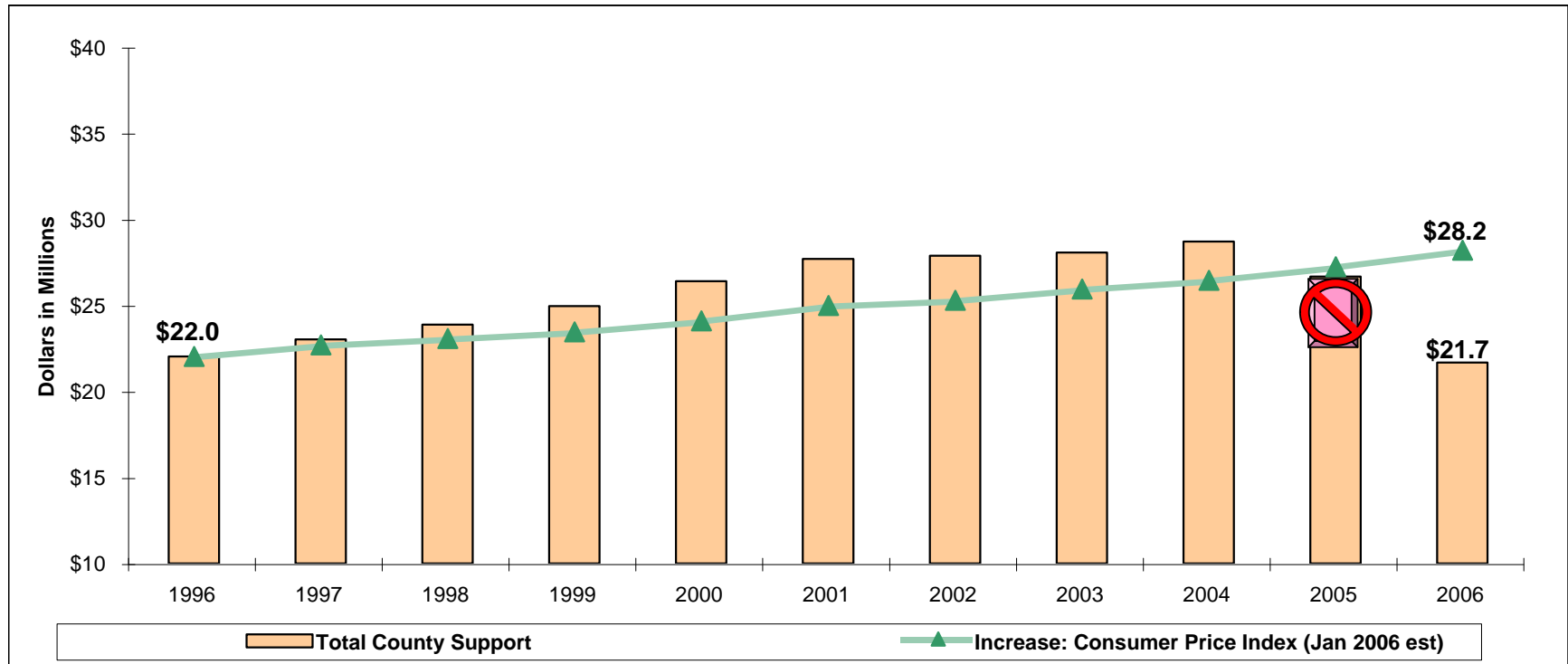
Basically, since 2004, county support for the Library has been reduced by 25% or \$7 million, leaving no choice but to reduce library operations. Only \$2.5 million of the reduction was in the Library Property Tax, which went from \$24.2 million in 2004 to \$21.7 million in 2005, remaining at \$21.7 million in 2006. The rest of the funding reduction resulted from a \$5 million cut in county capital funds for library materials (County capital funds are not raised through the Library Property Tax). This forced the Library to carve out money for library material purchases in 2006 from the already reduced \$21.7 million property tax, forcing the cuts and closures the Library and its patrons suffered through in late 2005.

The cuts and closures occurred in 2005 because \$5 million in the approved Erie County 2005 Capital Budget for library materials was never borrowed or issued to the Library, forcing the cuts to take place earlier to free up enough money to renew newspaper, magazine, database subscriptions and buy a relative handful of new books and other library materials in 2005.

The chart on the next page shows the history of funding support by source as reported in the County financial system. Note the total County Support line that shows 2006's \$21.7 million level takes library funding back to where it was one decade ago. Meanwhile, the consumer price index increased 30% over that same period. Had library support simply followed consumer prices, the Erie County funding support would total \$28.2 million.

Additional explanations, charts and graphs are included in the Library's Adopted 2006 Budget on the Library website at www.buffalolib.org

B&ECPL OPERATING AND LIBRARY MATERIAL BUDGETS 1996 - 2006



	1996 Adopted	1997 Adopted	1998 Adopted	1999 Adopted	2000 Adopted	2001 Adopted	2002 Adopted	2003 Adopted	2004 Adopted	2005 Adopted	2006 Budget
Erie County Capital For Library Materials	-	-	-	-	-	4,717,516	4,906,217	5,000,000	4,500,000	5,000,000	-
Property Tax for Library Purposes	22,028,963	23,018,144	23,866,460	24,953,953	26,393,455	22,969,980	22,969,980	23,067,481	24,197,118	21,671,833	21,671,833
Total County Support	22,028,963	23,018,144	23,866,460	24,953,953	26,393,455	27,687,496	27,876,197	28,067,481	28,697,118	26,671,833	21,671,833



As of December 31, 2005, County funding for Library Materials included in Erie County's 2005 Adopted Budget has not been provided to the Library. As this allocation is within the COUNTY Capital Budget, NOT the Library Fund, the allocation is not covered by the Library Protection Act. This results in an additional \$5 million gap in 2005 on top of the \$2.5 million reduction in the Library Tax that was part of the County's Adopted 2005 Budget.

Change in County Support From 2004 to 2006: (\$7,025,285) -24.5%
Change in County Support From 2000 to 2006: (\$4,721,622) -17.9%

New York State Aid	1,980,495	1,980,495	1,980,495	2,141,072	2,141,072	2,139,572	2,099,201	2,099,201	2,099,201	2,099,228	2,138,572
Use of Fund Balance	-	413,983	710,763	785,046	419,112	400,000	445,414	550,000	550,000	930,381	550,000
Fees, Fines, Other Revenue	784,709	788,537	854,813	982,708	993,058	985,329	1,047,757	1,546,127	1,635,121	1,369,701	942,724
Total Other Revenue	2,765,204	3,183,015	3,546,071	3,908,826	3,553,242	3,524,901	3,592,372	4,195,328	4,284,322	4,399,310	3,631,296

COMBINED OPERATING AND LIBRARY MATERIALS	24,794,167	26,201,159	27,412,531	28,862,779	29,946,697	31,212,397	31,468,569	32,262,809	32,981,440	31,071,143	25,303,129
---	------------	------------	------------	------------	------------	------------	------------	------------	------------	------------	------------