

– REQUEST FOR PROPOSAL –

Network, Server and Workstation
Support & Maintenance/Repair; Replacement Parts;
Project Management; and Consulting Services

For the

Buffalo & Erie County Public Library

RFP # 2024-028VF

Release Date: May 10, 2024

Responses Due: May 29, 2024

BUFFALO & ERIE COUNTY PUBLIC LIBRARY
1 LAFAYETTE SQUARE
BUFFALO, NY 14203-1887

TABLE OF CONTENTS

SECTION 1	ADMINISTRATIVE AND CONTRACTUAL INFORMATION	3
1.1	RFP Purpose	3
1.2	Issuing Office and Proposed Term	3
1.3	Organization	3
1.4	RFP Scope	4
1.5	Pertinent Dates	4
1.6	Proposal Preparation	5
1.7	Submittal of Proposals	5
1.8	Conflict of Interest	5
1.9	Non-Collusion	7
1.10	Opening; Conformity to Specifications; Clarification Bulletins	8
1.11	Selection Process; General Criteria	8
1.12	Interviews	9
1.13	Notifications	9
SECTION 2	DETAILED REQUIREMENTS	9
2.1	Current Technical Assessment	9
2.2	Objective	12
2.3	Scope of Work	12
SECTION 3	INSURANCE REQUIREMENTS	16
3.1	Liability and Insurance Requirements	16
SECTION 4	PROPOSAL: REQUIRED SUBMITTALS	18
4.1	Executive Summary	18
4.2	General Vendor Information	18
4.3	Contents	19
4.4	Personnel Resumes and MBE/WBE Status	19
4.5	Transition Plan	20
4.6	Pricing and Signature Page	20
	PRICING AND SIGNATURE PAGE	22
	APPENDICES A - F	

SECTION 1 ADMINISTRATIVE AND CONTRACTUAL INFORMATION

1.1 RFP Purpose

The Buffalo & Erie County Public Library is seeking a qualified information technology services vendor to partner with the Library to 1) provide hardware and software maintenance and repair for all servers, workstations, printers and related computer equipment; 2) supply parts and replacement equipment for out of warranty products and 3) optionally supply project management or consulting services. Vendor must be Cisco, Dell, HP and Microsoft certified.

1.2 Issuing Office and Proposed Term

This RFP is issued by the Buffalo & Erie County Public Library, which is responsible for the requirements specified in this RFP and for the evaluation of all proposals. The Library intends to enter into a three-year agreement, with an option to renew for up to two additional periods of up to three years.

1.3 Organization

The Buffalo & Erie County Public Library (“the Library” or “the B&ECPL”) is an independent educational corporation chartered by the University of the State of New York, State Education Department. The Library’s governance is established by State Law, stipulating a fifteen member Board of Trustees appointed by the County Executive and approved by the Erie County Legislature. The Board of Trustees appoints a Director and Deputy Directors and is responsible for setting policy, approving the annual budget and ongoing expenditures.

B&ECPL offers library services to the community through one (1) large Central Library and thirty-six (36) smaller branch and contract libraries. These libraries are spread across Erie County’s 1,043 square miles and serve a population of approximately 920,000. Information about the Library, including its Technology Plan 2013-2016, may be obtained from the Library’s web site <http://www.buffalolib.org/> and specifically, library locations can be seen at <https://www.buffalolib.org/locations-and-hours>.

The branch and contract libraries range in size from 3,331 to 21,122 square feet. The oldest library opened in 1913 and the newest is a renovated storefront which opened in 2009. All libraries offer public computers and free WiFi access. 289,403 public access computer sessions, using over 900 public workstations, were recorded in 2023. 610,507

WiFi logons were recorded system-wide. In 2023, circulation totaled almost 6.9 million and more than 2.1 million patrons visited the libraries.

The B&ECPL is committed to meet the extraordinary literacy and technology needs of the residents of Erie County.

1.4 RFP Scope

The information and instructions contained in this RFP are intended to provide interested vendors with information necessary to prepare and submit proposals and accompanying materials. RFP sections include:

- Administrative and Contractual information
- Detailed Requirements
- Proposer Requirements
- Proposal Required Submittals
- Pricing and Signature Page

All prospective vendors are strongly urged to participate. All expenses incurred for participation including, but not limited to travel, lodging and food are the sole responsibility of the vendor.

All inquiries concerning this RFP should be addressed to:

Melissa Goodrich
Library Purchasing Coordinator
Buffalo and Erie County Public Library
1 Lafayette Square
Buffalo, New York 14203-1887
(716) 858-6121
Email: goodrichm@buffalolib.org

1.5 Pertinent Dates

- | | | |
|----|------------------------------|---------------------|
| A. | RFP Released and Advertised: | May 10, 2024 |
| D. | Closing Date for Inquiries: | May 17, 2024 |
| E. | Submittal of Proposals: | May 29, 2024, 11 AM |
| E. | Review of Proposals | June 5, 2024 |

1.6 Proposal Preparation

The proposal should follow the format outlined in Section 4 of this RFP. Vendors should feel free to augment their responses with additional information as they deem appropriate. Failure to follow the prescribed format for responses may result in disqualification.

1.7 Submittal of Proposals

Interested vendors should submit one unbound hard copy to the individual listed in Section 1.5 by 2 p.m. Eastern Time on the Submittal of Proposal date specified in Section 1.6. Submittal of an electronic version in its original format with the hard copy is desirable. Vendors have sole responsibility to assure that their proposals are received on time.

The content of each proposal will be held in strict confidence and no details of any proposal will be divulged to any other vendor prior to proposal openings.

1.8 Conflict of Interest

- A. [1] No officer or employee of B&ECPL shall have an interest in any contract with the vendor, when such officer or employee, has the power or duty to
- (a) negotiate, prepare, authorize or approve the contract or authorize or approve payment there under,
 - (b) audit bills or claims under the contract, or
 - (c) appoint an officer or employee who has any of the powers or duties set forth above, and
- [2] "Interest" as used herein means a direct or indirect pecuniary or material benefit accruing to an officer or employee of B&ECPL as the result of a contract with B&ECPL. An officer or employee of B&ECPL shall be deemed to have an interest in the contract of
- (a) their spouse, minor children and dependents, except a contract of employment with B&ECPL,
 - (b) a firm, partnership or association of which such officer or employee is a member or employee,
 - (c) a corporation of which such officer or employee is an officer, director or employee and

- (d) a corporation any stock of which is owned or controlled directly or indirectly by such officer or employee. New York State General Municipal Law §§ 800 - 801.

B. [1] The provisions of section 1.9 A. shall not apply to:

- (a) A contract with a person, firm, corporation or association in which an officer or employee of B&ECPL has an interest which is prohibited solely by reason of employment as an officer or employee thereof, if the remuneration of such employment will not be directly affected as a result of such contract and the duties of such employment do not directly involve the procurement, preparation or performance of any part of such contract;
- (c) A contract with a membership corporation or other voluntary non-profit corporation or association;
- (g) A contract in which an officer or employee of B&ECPL has an interest if such contract was entered into prior to the time he or she was elected or appointed as such officer or employee, but this paragraph shall in no event authorize a renewal of any such contract;

- [2] (a) A contract with a corporation in which an officer or employee of B&ECPL has an interest by reason of stockholdings when less than five per centum of the outstanding stock of the corporation is owned or controlled directly or indirectly by such officer or employee;
- (b) A contract in which a municipal officer or employee has an interest if the total consideration payable thereunder, when added to the aggregate amount of all consideration payable under the contracts in which such person had an interest during the fiscal year, does not exceed the sum of one hundred dollars;
- (f) A contract with a member of a private industry council established in accordance with the federal job training partnership act (29 U.S.C.A. § 1501 et seq.) or any firm, corporation or association in which such member holds an interest, provided the member discloses such interest to the council and the member does not vote on the contract. General Municipal Law § 802.

C. [1] Any officer or employee of B&ECPL who has, will have, or later acquires an interest in any actual or proposed contract with B&ECPL of which they are an officer or employee, shall publicly disclose the nature and extent of such interest in writing to the governing body thereof as soon as he or she has knowledge of such actual or prospective interest. Such written disclosure

shall be made part of and set forth in the official record of the proceedings of B&ECPL. Once disclosure has been made by an officer or employee with respect to an interest in a contract with a particular person, firm, corporation or association, no further disclosures need be made by such officer or employee with respect to additional contracts with the same party during the remainder of the fiscal year.

- [2] Notwithstanding the provisions of section 1.9 C.[1], disclosure shall not be required in the case of an interest in the contract described in section 1.9 B.[2], above.

1.9 Non-Collusion

A. Each proposal shall also contain the following statement subscribed by the proposer and affirmed by such proposer as true under the penalties of perjury.

- [1] By submission of this proposal, each person signing on behalf of any proposer certifies, and in the case of a joint proposal each party thereto certifies as to its own organization, under the penalty of perjury, that to the best of knowledge and belief:

- (a) The prices in this proposal have been arrived at independently without collusion, consultation, communication, or agreement, for the purpose of restricting competition, as to any matter relating to such prices with any other proposer or with any competitor;
- (b) Unless otherwise required by law, the prices which have been quoted in this proposal have not been knowingly disclosed and will not knowingly be disclosed by the proposer prior to opening, directly or indirectly, to any other proposer or to any competitor; and
- (c) No attempt has been made or will be made by the proposer to induce any other person, partnership, or corporation to submit or not to submit a proposal for the purpose of restricting competition.

1.10 Opening; Conformity to Specifications; Clarification Bulletins

- A. The proposals are opened as stated in the call for proposals or as soon thereafter as reasonably possible. They are irrevocable after opening for ninety (90) days or any period specified in the call for proposals.
- B. Selection is based upon a comparison of the proposal as submitted with the requirements identified in the RFP and, where necessary, clarification bulletins.
- C. Clarification bulletins may be issued to correct mistakes, answer questions, or resolve ambiguities during the proposal solicitation process. The date and time of proposal opening may be extended only once, and not more than twenty business days. Any proposal may be withdrawn prior to the time of opening in case of an extension. Reasonable effort will be made to notify all who have submitted proposals.
- D. If major revisions become necessary, or for any other reason, all proposals may be rejected and a new call published, subject to the discretion of B&ECPL.
- E. Unopened proposals are to be returned if the proposer requests and supplies a prepaid mailer.
- F. Specific questions regarding the RFP may be submitted in writing to the individual listed in Section 1.5.

1.11 Selection Process; General Criteria

- A. B&ECPL reserves the right to reject all proposals, waive minor irregularities, and/or call for new proposals.
- B. The Library shall pay the Contractor, as full compensation for everything furnished and done under this Contract, amounts based upon "Pricing for Proposed and optional Items" (Schedule 1 to the Contract) with all with all fees at or below the prices quoted in the Contractor's "Incorporated Bid Documents" (Schedule 9 to the Contract). Unless otherwise provided by the Parties Schedule 1, costs during any Renewal Term shall have a cap on annual increases of 2.9% or the annual percentage change in the Consumer Price Index for the relevant period, whichever is lower.
- C. The contract will be awarded based on the response that best fits the Buffalo & Erie County Public Library's requirements. The award will be made to the provider that best meets the following criteria:
 - Cost
 - Qualifications of the professionals to be assigned to the project
 - Vendor status with Cisco, Dell, HP and Microsoft
 - Vendor's understanding of the project and its goals

- Transition Plan
- Approach
- Prior experience
- References
- Realistic response time
- Loaner policy
- Local business presence
- Other criteria that evaluators might deem important to the interest of the Buffalo & Erie County Public Library.

1.12 Interviews

In the event B&ECPL requires additional information or determines a personal interview is necessary prior to selection of a finalist, B&ECPL may elect to interview finalists at the Central Library or another location to be identified by the B&ECPL. All proposer expenses for travel to Buffalo associated with proposer interviews are to be borne exclusively by participating vendors and not by B&ECPL.

1.13 Notifications

Upon approval, the successful proposer will be notified in writing and a purchase/ work order issued, or a contract shall be prepared by B&ECPL.

SECTION 2 DETAILED REQUIREMENTS

2.1 Current Technical Assessment

Today, the Buffalo & Erie County Public Library has a significant technical infrastructure to support both staff and “public access” computing at all the libraries. A brief description follows.

The Library utilizes the SirsiDynix Symphony platform as its Library Automation System. Staff workstations run the client-side java based application called “Workflows”. A web-based catalog, which accesses Sirsi’s bibliographic and patron databases, provides graphical access to the full collection. Each library has a similarly configured local area network linking staff workstations to this enterprise system. Staff computers also contain appropriate software such as Google Chrome and Microsoft office.

BECPL RFP #2024-028 and RFP#2024-029

In addition, each of the thirty-six (36) city and suburban library outlets has between six and fifty "Public access computers" while Central has over one hundred. Using this equipment, patrons have access to the Internet, Microsoft Office, and various productivity and educational programs. Envisionware's PC Reservation software is used for time sharing. All public workstations are configured identically using Active Directory, and Group Policies.

All workstations are protected from infection by viruses and other intrusions using Avast Antivirus or Windows Defender. Workstations are updated daily with current signature files.

The Library system offers both filtered and unfiltered internet access. Adult patrons using library cards can switch between them via functionality contained on our website and via a vbscript utility on the desktop.

Appendix A contains a summary list of existing equipment.

2.1.1 Server

Main servers are maintained in a secure, climate controlled data center located at the Central Library at 1 Lafayette Square, Buffalo, New York. Each branch also has a server at each location that acts as part of a Microsoft Windows distributed file system, which serves files related to public mandatory roaming profiles.

A combination of Linux and Microsoft Windows is utilized by the servers.

Servers are backed up nightly.

Appendix B includes a list of equipment housed in the Data Center and each branch, highlighting each of the critical servers designed to perform an important function for the B&ECPL.

2.1.2 Network

The Library's Network Support Department provides telecommunications services and information systems support for both patrons and staff. These systems and services comprise a complex wide area network (WAN) of the highest importance.

The Wide Area Network consists of thirty-six (36) point-to-point fiber optic circuits [one to each of the 36 branch and contract libraries] with one (1) Ethernet handoff at each end. The circuits are currently provided by Spectrum.

The Central Library Network Center has a Cisco 4506 switch for the core. A Cisco 3825 router is used for Internet access which is currently provided by Fibertech. A Cisco ASA5520 firewall is also in place.

The WAN must have the highest possible availability and uptime. Redundancy and self-healing network technologies are utilized. Data center operations staff is on-site almost 7x24 and monitor system performance. Network administration and engineering staff is on call.

The existing network used by the Buffalo & Erie County Public Library is presented graphically as a Network Diagram in Appendix C.

2.1.3 RFID Technology

All 37 libraries have fully functioning RFID technology for public self-checkout supported by EnvisionWare, Inc. software. In addition, the Town of Amherst's Main Library at Audubon has a 9-bin Automated Materials Handling (AMH) and sorting system supported by Bibliotheca hardware and software. This system includes an external return chute for public convenience. Several libraries have theft-detection alarmed gates supported by EnvisionWare, Inc. hardware and technology.

Although the Library does contract for maintenance service on much of the RFID equipment, the computer technicians are expected to be familiar with RFID technologies and be able to troubleshoot and conduct preliminary assessment/analysis when problems occur. They may also need to work directly with the third party vendor to diagnose problems as well as log outstanding issues.

2.1.4 Organization

The Library's Information Technology (IT) Department provides 24/7 support for all aspects of System technology including the network infrastructure, hardware and software. The department consists of both Library employees and staff members supplied by a local information technology services vendor as part of an existing contract set to expire at the end of June, 2024.

Library employees currently include:

- Information Technology Administrator
- Technology Support Service Specialist
- Junior Technology Support Service Specialist
- Computer Application Support Technician
- Senior Computer Operator

Computer Operator
Web Page Master
Technical Specialists (3)
Computer Operator - Part time

One full-time A+ certified (or possessing equivalent experience) computer technicians is a “Contract” employees. The computer technicians are responsible for all hardware and software maintenance, including ordering all parts and maintaining the equipment inventory. They work under the guidance of the Library’s Information Technology Administrator or designee and participate as a member of the Network Support team, located at the Central Library. In the course of the workday, they may travel to any library location in Erie County.

2.2 Objective

The objective of this RFP is to acquire a contract to provide maintenance, support and replacement parts for critical components of the Buffalo & Erie County Public Library’s technical infrastructure, including, but not limited to network, servers, workstations, printers, equipment peripherals and associated software as well as secure optional project management or consulting services.

2.3 Scope of Work

The scope of work that will be included in the contract awarded as a result of the RFP evaluation will include, but not be limited to:

- a. Computer Technicians: 1- Full Time with an option for 2 (Please Specify additional cost per technician)

Technician/technicians must meet the following qualifications:

- Have two years experience servicing multi-vendor desktop devices
- Have detailed knowledge of PC hardware and operating systems
- Have experience in installing PC hardware and application software, including but not limited to, Microsoft Office
- Have experience installing and troubleshooting local area networks, including, but not limited to the use of wiring closets, patch panels, cabling/wiring, switches, and wireless access points
- Have practical experience and/or general knowledge of RFID technologies
- Be able to prioritize and manage many tasks simultaneously
- Be a “team player” and have excellent interpersonal skills

- Exhibit professionalism

Computer technician/ technicians will report daily to the Information Technology Department located in the Central Library, 1 Lafayette Square, Buffalo NY. It is anticipated that one computer technician will remain in the large 400,000 square foot Central Library with over two hundred staff computers and one hundred public access workstations and the other will provide service to the thirty-six (36) branch and contract libraries located throughout Erie County.

The computer technicians must be cross-trained and serve as backup to each other. The Library reserves the right to approve assignment of all computer technicians and to request re-assignment if performance is not satisfactory.

In addition, substitutes must be provided any time a technician is absent (i.e. sick, vacation, personal time off). The Library reserves the right to reject any substitute not meeting standards or not able to perform the basic duties. In the event that a substitute is not available, acceptable or provided, the Library may request a salary credit for hours not fulfilled.

b. Project Manager/System Engineer

For special projects that require outside expertise or large projects that require additional staff, the consulting services of a Project Manager or System Engineer may be required. The individual(s) would work closely with the Library's IT Administrator, the network support team and any other appropriate B&ECPL staff. The individual(s) may also be required to supervise staff.

The Project Manager must have a proven track record implementing technical projects and have demonstrated the ability to understand the importance of the technology in the context of the business. The Project Manager must be competent with the System Development Life Cycle and be proficient in the use of basic management tools such as Microsoft *Project*. He or she must be a proven leader, have demonstrated excellent planning skills, work well with others, be able to conduct regular project meetings, meet schedules and work within a budget.

The Project Manager must have at least three (3) years of experience in leading technical projects and be competent in all related activities including a) planning and organizing the work; b) estimating and acquiring the material and human resources; c) assigning, directing and controlling the tasks; and d) reporting the progress.

The System Engineer must be Microsoft Certified (MCSE). He or she may perform duties related to maintaining the local area network, one or more websites, and consulting on, or performing, system application upgrades such as Exchange servers and/or operating systems. Proficiency with Linux and LAMP is also necessary. Additional certifications, training and formal education are considered beneficial.

The Library reserves the right to approve assignment of any Project Manager or System Engineer and to request re-assignment, if performance is not satisfactory. This requirement for a Project Manager and/or System Engineer will vary from no need to full-time, depending upon the needs of the Library.

c. Hardware Parts

Vendor must be Cisco, Dell, HP and Microsoft certified and be able to provide all maintenance (warranty or non-warranty) for the servers, personal computers, printers and related equipment detailed in Appendices A and B. Actively used equipment, contained herein, may be upgraded and/or replaced during the contractual period, at the Library's discretion to meet its business needs.

The contract cost should include the cost for parts, for all server, workstation, printer and related hardware, not covered under warranty.

It is expected that, under normal circumstances, the computer technician will be able to respond to a service call with eight (8) working hours from the time the IT Department is notified and repair within a maximum of forty-eight (48) clock hours excluding weekends and county holidays within the hours of coverage. It is understood that other priorities at the B&ECPL may affect the ability to meet these objectives, if one or two of the computer technicians are re-assigned to a special project (e.g. move computer equipment from one location to another for library renovation) adjustments will be made.

However, servers performing critical functions that affect the entire network, or an entire facility, must be given the highest priority and response must be as soon as possible, normally within 2 hours. Parts for these servers must be readily available and installed within a maximum twenty-four (24) working hours. If a server becomes inoperable during non-normal working hours and the Library deems that it is an "emergency," the vendor may be contacted using a "7x24 hotline" for "after-hours" care. It is understood additional charges may apply.

If it is found that permanent equipment replacement would be the best way to repair a specific piece of equipment, the replacement must be the exact same type

unless prior approval from the Library is obtained. Vendor must change appropriate drivers and test all software to ensure it is working with the new drivers. If time permits, preventative maintenance should be performed.

d. Library Locations

Service must be provided at all Buffalo & Erie County Public Library locations. The thirty-seven (37) locations including the Central Library, city branch libraries and contract libraries are listed in Appendix D.

e. Hours of Coverage

Vendor is requested to provide computer technician service between the hours of 8 AM and 6 PM, Monday through Friday, excluding Library holidays. Exact schedules will be set to best meet the needs of the B&ECPL. Each employee should work eight (8) full hours excluding a one hour break for lunch. The B&ECPL may elect to modify these hours for a special project with advance notice.

In addition, an emergency "7x24 hotline" service must be provided.

The hourly rate specified in the contract may be billed for all overtime or at the Library's discretion, may be used as "Comp (compensatory) Time" at a time when it is mutually convenient for the employee and the B&ECPL.

f. Library Rules of Conduct

Vendor employees, working at any Buffalo & Erie County Public Library location, must comply with the "Rules of Conduct" and all policies and procedures governing its employees. Full-time contractors are expected to display identification tags all times.

g. Loaner Equipment

The B&ECPL maintains a stock of "spare" equipment to be used while existing equipment is being repaired. However, in the case of an "emergency" or when critical equipment is not in stock, loaner equipment is to be supplied.

h. Headphones/Mice and Other Disposable Equipment

All "public access computers" have mice and selected units have headphones. Contract will cover replacement of these parts as needed.

i. Inventory Record-keeping

Computer technicians assigned to the Buffalo & Erie County Public Library must be familiar with Gestionnaire libre de parc informatique (GLPI), the free management of computer equipment software used by the Library. They must maintain the GLPI “automated inventory system” with current information, including but not limited to, 1) Library; 2) Class; 3) Manufacturer; 4) Model; 5) Serial Number 6) County ID; 7) User Name; 8) Date Updated; 9) Warranty Date and 10) Comments (i.e. PO Number, Replacement Data).

j. Service and Help Desk Reporting

Technicians assigned to the Buffalo & Erie County Public Library must maintain the Library’s “Help Desk” database which contains all outstanding and closed calls for service. All service that was provided should be recorded daily and should include the current status, serial numbers and locations of equipment serviced or exchanged.

SECTION 3 INSURANCE REQUIREMENTS

3.1 Liability and Insurance Requirements.

The Proposer must certify that the Proposer is an independent contractor and the Proposer’s firm, its officers, employees, agents or subcontractors shall not be considered to be employees or agents of B&ECPL. The Proposer shall indemnify and hold B&ECPL harmless from any loss, liability, damage, death or injury to any person or property, from any negligent or wrongful act or omission of the Proposer, its agents, or employees, arising directly or indirectly as a consequence of this contract.

The Proposer shall further indemnify, defend, and hold harmless the County of Erie, its officers, employees and agents from and against any and all liability, damage, claims, demands, costs, judgments, fees, attorney’s fees or loss arising directly or indirectly out of the performance or failure to perform hereunder by the Proposer or third parties under the direction or control of the Proposer.

Insurance shall be procured by the successful proposer before commencing work, no later than 14 days after notice of award, and maintained without interruption for the duration of the contract, in the kinds and amounts specified in Appendix E “B&ECPL, Standard Insurance Requirements “ and “Erie County, Standard Insurance Requirements” unless modified by mutual agreement. If the insurance

is not provided in acceptable form within this period of time or lapses during the contract period, then the Buffalo & Erie County Public Library may immediately terminate the contract.

SECTION 4 PROPOSAL: REQUIRED SUBMITTALS

4.1 Executive Summary

The Buffalo & Erie County Public Library requires that you prepare an executive summary of your proposal. This should contain a brief history of your firm and a description of your proposed offering. This should also include a summary of your proposed pricing and the resources you would dedicate toward fulfillment of a contract with The Buffalo & Erie County Public Library. Highlights of your firm's capabilities should also be included.

4.2 General Vendor Information

4.2.1 Vendor Background

Background information must be submitted to enable the Buffalo & Erie County Public Library to evaluate your firm's stability and resources to perform the obligations and responsibilities under a contract with the Library. This must include the following general information about your firm:

- History
- Mission
- Services
- Address of Headquarters
- Company Contact Information
- Financial Stability

This section should also include an Employee Identification, a statement of the proposer's non-discrimination and equal employment opportunity policies, and MBE/WBE if applicable or statement of the anticipated utilization of minority professionals as a percentage of the staffing to be utilized on this project and the anticipated utilization of women professionals as a percentage of the staffing to be utilized on this project.

4.2.2 Vendor References

The Library will entertain proposals from vendors who are Cisco, Dell, HP and Microsoft certified, have had prior experience 1) maintaining and supporting a wide-range of desktop equipment located in many locations in a broad area and 2) providing expertise to develop, enhance, maintain and support a complex local and wide area network. The firm shall list three (3) customers for who the firm has provided similar solutions and provided services. The company name, address, representative and telephone number must be included.

4.3 Contents

In addition to the above, each vendor must supply a narrative with the following specific information:

- Methods and practices proposed to provide the Library with timely maintenance, support and upgrades
- Project description and work plan detailing the approach the vendor intends to follow
- Ability to comply with requirements in the Scope of Work (Section 1.4) including, but not limited to, Response Time Commitment and Loaner Policy
- Escalation procedures
- Warehouse logistics for spare parts
- Experience and resumes of the professionals to be assigned to the Library
- Qualifications
- Cisco certified vendor status
- Dell certified vendor status
- HP certified vendor status
- Microsoft certified vendor status
- Dell Authorized service provider on staff
- HP authorized service provider with ASE on staff
- Microsoft Certified System Engineer on staff and proposed Library role
- Cisco Certified Network Professional on staff and proposed Library role
- Other warranty certifications

4.4 Personnel Resumes and MBE/WBE Status

In addition to the above, each vendor must supply resumes, highlighting the experience and qualifications, of the professionals to be assigned to the B&ECPL.

If the proposer and/or subcontractor(s) are a Certified Minority Business Enterprise/Women's Business Enterprise (MBE/WBE), Proposers should include the Erie County certification letter with the proposal. If not, include a statement of the anticipated utilization of minority professionals as a percentage of the staffing to be utilized on this project and the anticipated utilization of women professionals as a percentage of the staffing to be utilized on this project (note: the selected proposer must provide a statement of the actual utilization must be provided prior to final payment for work on this project).

4.5 Transition Plan

Vendor must provide a comprehensive transition plan which should include 1) start dates; 2) introduction of personnel to be assigned to the Library; 3) Inventory and Help Desk software tactics; and 4) detailed information on how the new computer technicians assigned to the B&ECPL will be trained for their new responsibilities at the Library.

It is strongly recommended that the plan include an overlap with existing “contract” employees. Any expenses associated with the service must be assumed by the vendor. Specifically, the vendor awarded the contract may elect to ask the Library to continue the existing contract for 1-4 weeks, for a training period, at the expense of the new vendor.

4.6 Pricing and Signature Page

Vendor must complete all sections, sign and submit the “Pricing and Signature Page” with the proposal. All vendors submitting proposals are expected to provide one base proposal that complies with all proposal specifications. In addition, each proposer may, at its discretion, submit an alternate response. However, the vendor must submit a completed “Pricing and Signature Page” form for each proposal.

Annual pricing is to be computed based upon the current volume of equipment located at the thirty-seven library locations as specified in Appendix F. The annual price will be billed quarterly in equal installments.

At the present time, the Library does not anticipate an increase or reduction in facilities. The Library does also not anticipate a significant change in technology inventory. If budgetary circumstances change during the life of the contract, it is expected that the proposer will provide a corresponding decrease or increase, if the volume of equipment significantly increases or decreases (more than 10%). Each quarter, the Buffalo & Erie County Public Library will provide the successful vendor with an updated inventory of actively used equipment. Totals on the report will indicate the % of increase or decrease since the last quarter. For each 10% decrease in inventory, the quarterly invoice should be adjusted by the amount listed on the “Pricing and Signature Page.” If the inventory is increased by 10% or more of equipment not covered under warranty or maintenance, the quarterly invoice could be adjusted by the amount listed on the “Pricing and Signature Page.” Adjustments should take into account that 1) two computer technicians will be required until the volume of equipment is decreased by more than 50% and 2) newer, more likely to be under warranty, equipment will be retained.

The services of the Project Manager and Microsoft Certified Systems Engineer will be billed based upon an hourly rate for all hours worked. A discounted rate may be offered for full-time (at least three months) assignment.

In addition, there may be a need for an additional computer technician at various times for special projects. These services should typically be billed at an hourly rate, but also quote an option for an additional full-time (at least three months) assignment.

After the first three years of the contract, annual pricing for subsequent three-year contract periods may, by mutual agreement, increase as much as the CPI (consumer price index) increase for the prior calendar year as reported by the U.S. Department of Labor - Bureau of Labor Statistics.



PRICING AND SIGNATURE PAGE

This form MUST be submitted with proposal.

VENDOR FURTHER CERTIFIES THAT THE PERSON SIGNING THIS PAGE IS AUTHORIZED TO COMMIT THE VENDOR TO THESE TERMS AND CONDITIONS AND BY SIGNING, DOES SO COMMIT THE VENDOR.

Name of Vendor	Title
Name of Company	
Address	Telephone
Signature of Vendor	Date of Signature

The total annual price for hardware maintenance and parts replacement, as well as two full-time computer technicians, as specified in this Request for Proposal	Not to exceed \$\$\$
The total annual price decrease/increase for each 10% decrease in the volume of equipment	Not to exceed \$\$\$
The total annual price decrease/increase for each 10% increase in the volume of equipment	Not to exceed \$\$\$
Hourly rate Computer Technician – based upon hourly assignment during normal work day	Not to exceed \$\$\$
Hourly rate Computer Technician – based upon full-time assignment greater than three (3) months	Not to exceed \$\$\$
Hourly rate Microsoft Certified Systems Engineer – based upon hourly assignment during normal work day	Not to exceed \$\$\$
Hourly rate Microsoft Certified Systems Engineer – based upon hourly assignment for “Emergency” after hour work	Not to exceed \$\$\$

Hourly rate Microsoft Certified Systems Engineer – based upon full-time assignment greater than three (3) months	Not to exceed \$\$\$
Hourly rate Project Manager – based upon hourly assignment during normal work day	Not to exceed \$\$\$
Hourly rate Project Manager – based upon hourly assignment for “Emergency” after hour work	Not to exceed \$\$\$
Hourly rate Project Manager – based upon full-time assignment greater than three (3) months	Not to exceed \$\$\$
Annual increase, after 1 st three years of contract (not to exceed CPI-U)	Not to exceed \$\$\$

Appendix A- List of Existing Equipment

Name	Manufacturer	Serial	Location
DELL CHROMEBOOK 11 3100	DELL	CWHMNJ3	ALD
DELL LATITUDE 3510 BTX	DELL	1CGNG63	ALD
DELL LATITUDE 3510 BTX	DELL	GLDKG63	ALD
DELL OPTIPLEX 3010 SFF	DELL	D8QB8Y1	ALD
DELL OPTIPLEX 3010 SFF	DELL	D8Q98Y1	ALD
DELL OPTIPLEX 5490	DELL	11V03Q3	ALD
DELL OPTIPLEX 5490	DELL	1B413Q3	ALD
DELL OPTIPLEX 5490	DELL	21V03Q3	ALD
DELL OPTIPLEX 5490	DELL	31V03Q3	ALD
DELL OPTIPLEX 5490	DELL	41V03Q3	ALD
DELL OPTIPLEX 5490	DELL	D8413Q3	ALD
DELL OPTIPLEX 5490	DELL	G5413Q3	ALD
DELL OPTIPLEX 7490	DELL	79ZPWP3	ALD
DELL OPTIPLEX 7490	DELL	FBZPWP3	ALD
DELL POWEREDGE T110 II SERVER	DELL	3SYKV12	ALD
LENOVO THINKPAD EDGE LAPTOP	LENOVO	R9M4VGA	ALD
LENOVO THINKPAD EDGE LAPTOP	LENOVO	R9M4VGH	ALD
POSIFLEX KS7317	POSIFLEX	KSC23899	ALD
DELL CHROMEBOOK 11 3100	DELL	CY490H3	ANG
DELL CHROMEBOOK 11 3100	DELL	GZFD0H3	ANG
DELL CHROMEBOOK 11 3100	DELL	JF780H3	ANG
DELL LATITUDE 3520 XCTO	DELL	65RYCS3	ANG
DELL LATITUDE 3520 XCTO	DELL	55RYDS3	ANG
DELL LATITUDE 3520 XCTO	DELL	GB9BFS3	ANG
DELL OPTIPLEX 5490	DELL	J7Y29R3	ANG
DELL OPTIPLEX 5490	DELL	JP329R3	ANG
DELL OPTIPLEX 5490	DELL	274LTH3	ANG
DELL OPTIPLEX 5490	DELL	11B29R3	ANG
DELL OPTIPLEX 5490	DELL	20B29R3	ANG
DELL OPTIPLEX 5490	DELL	22B29R3	ANG
DELL OPTIPLEX 5490	DELL	31B29R3	ANG
DELL OPTIPLEX 5490	DELL	72B29R3	ANG
DELL OPTIPLEX 5490	DELL	90B29R3	ANG
DELL OPTIPLEX 7460	DELL	2CF8PX2	ANG
DELL OPTIPLEX 7490	DELL	DPKS2L3	ANG
DELL POWEREDGE T110 II SERVER	DELL	3T0KV12	ANG
POSIFLEX KS-7317Z	POSIFLEX	KSDA5885	ANG
DELL CHROMEBOOK 11 3100	DELL	4DPNNJ3	AUD
DELL LATITUDE 3520 XCTO	DELL	FV7KGS3	AUD
DELL OPTIPLEX 5400	DELL	91PM7V3	AUD
DELL OPTIPLEX 5400	DELL	9ZNM7V3	AUD
DELL OPTIPLEX 5400	DELL	1CPDRT3	AUD
DELL OPTIPLEX 5400	DELL	CYNM7V3	AUD
DELL OPTIPLEX 5400	DELL	2CPDRT3	AUD
DELL OPTIPLEX 5400	DELL	CZNM7V3	AUD
DELL OPTIPLEX 5400	DELL	2GSDRT3	AUD
DELL OPTIPLEX 5400	DELL	D0PM7V3	AUD
DELL OPTIPLEX 5400	DELL	8BPDRT3	AUD
DELL OPTIPLEX 5400	DELL	D2PM7V3	AUD
DELL OPTIPLEX 5400	DELL	9DPDRT3	AUD

DELL OPTIPLEX 5400	DELL	F1PM7V3	AUD
DELL OPTIPLEX 5400	DELL	DBPDRT3	AUD
DELL OPTIPLEX 5400	DELL	FYNM7V3	AUD
DELL OPTIPLEX 5400	DELL	JGSDRT3	AUD
DELL OPTIPLEX 5400	DELL	FZNM7V3	AUD
DELL OPTIPLEX 5400	DELL	G0PM7V3	AUD
DELL OPTIPLEX 5400	DELL	10PM7V3	AUD
DELL OPTIPLEX 5400	DELL	GXNM7V3	AUD
DELL OPTIPLEX 5400	DELL	11PM7V3	AUD
DELL OPTIPLEX 5400	DELL	HZNM7V3	AUD
DELL OPTIPLEX 5400	DELL	1ZNM7V3	AUD
DELL OPTIPLEX 5400	DELL	22PM7V3	AUD
DELL OPTIPLEX 5400	DELL	33PM7V3	AUD
DELL OPTIPLEX 5400	DELL	50PM7V3	AUD
DELL OPTIPLEX 5400	DELL	52PM7V3	AUD
DELL OPTIPLEX 5400	DELL	60PM7V3	AUD
DELL OPTIPLEX 5400	DELL	6YNM7V3	AUD
DELL OPTIPLEX 5400	DELL	7ZNM7V3	AUD
DELL OPTIPLEX 5400	DELL	82PM7V3	AUD
DELL OPTIPLEX 5400	DELL	90PM7V3	AUD
DELL OPTIPLEX 5490	DELL	BSHT5S3	AUD
DELL OPTIPLEX 5490	DELL	9SHT5S3	AUD
DELL OPTIPLEX 7460	DELL	CZCZDX2	AUD
DELL OPTIPLEX 7460	DELL	J7TZP42	AUD
DELL OPTIPLEX 7460	DELL	2Y1QN42	AUD
DELL POWEREDGE T110 II SERVER	DELL	HTRW8Z1	AUD
DELL VOSTRO 330 FT 04	DELL	3V0C5P1	AUD
DELL VOSTRO 330 FT 04	DELL	BT0C5P1	AUD
DELL VOSTRO 330 FT 04	DELL	GT0C5P1	AUD
DELL VOSTRO 330 FT 04	DELL	H03D5P1	AUD
DELL VOSTRO 360	DELL	7BNS9Q1	AUD
DELL VOSTRO 360	DELL	9TWS9Q1	AUD
DELL CHROMEBOOK 11 3100 KIT #10	DELL	6JP2GD3	BOS
DELL CHROMEBOOK 11 3100 KIT #7	DELL	D6S0GD3	BOS
DELL CHROMEBOOK 11 3100 KIT #8	DELL	5RP2GD3	BOS
DELL CHROMEBOOK 11 3100 KIT #9	DELL	DPP2GD3	BOS
DELL OPTIPLEX 5490	DELL	26413Q3	BOS
DELL OPTIPLEX 5490	DELL	27413Q3	BOS
DELL OPTIPLEX 5490	DELL	38413Q3	BOS
DELL OPTIPLEX 5490	DELL	46413Q3	BOS
DELL OPTIPLEX 5490	DELL	CB413Q3	BOS
DELL OPTIPLEX 5490	DELL	GB413Q3	BOS
DELL OPTIPLEX 5490	DELL	J8413Q3	BOS
DELL OPTIPLEX 7460	DELL	HM4NP42	BOS
DELL OPTIPLEX 7490	DELL	GRNS2L3	BOS
DELL POWEREDGE T110 II SERVER	DELL	50VKCY1	BOS
POSIFLEX KS7517	POSIFLEX	KSD50383	BOS
DELL CHROMEBOOK 11 3100	DELL	D4BNNJ3	CFD
DELL OPTIPLEX 3040 SFF	DELL	74RC8C2	CFD
DELL OPTIPLEX 3040 SFF	DELL	74WB8C2	CFD
DELL OPTIPLEX 3040 SFF	DELL	74XF8C2	CFD
DELL OPTIPLEX 3040 SFF	DELL	7L1L8C2	CFD

DELL OPTIPLEX 3040 SFF	DELL	7L4D8C2	CFD
DELL OPTIPLEX 5400	DELL	7Q5HYS3	CFD
DELL OPTIPLEX 5400	DELL	9S5HYS3	CFD
DELL OPTIPLEX 5400	DELL	CS5HYS3	CFD
DELL OPTIPLEX 5400	DELL	FM2HYS3	CFD
DELL OPTIPLEX 5400	DELL	5YNM7V3	CFD
DELL OPTIPLEX 5400	DELL	3T5HYS3	CFD
DELL OPTIPLEX 5400	DELL	4S5HYS3	CFD
DELL OPTIPLEX 5490	DELL	79Y29R3	CFD
DELL OPTIPLEX 7490	DELL	DQNS2L3	CFD
DELL OPTIPLEX 7490	DELL	BBZPWP3	CFD
DELL OPTIPLEX 7490	DELL	D9ZPWP3	CFD
DELL POWEREDGE T110 II SERVER	DELL	HTRY8Z1	CFD
LAPTOP HP SMART BUY PROBOOK 4540s	HP	2CE23127	CFD
DELL CHROMEBOOK 11 3100	DELL	GVHNNJ3	CLA
DELL OPTIPLEX 3010 SFF	DELL	CG9YBY1	CLA
DELL OPTIPLEX 3010 SFF	DELL	CG7YBY1	CLA
DELL OPTIPLEX 3010 SFF	DELL	CG7ZBY1	CLA
DELL OPTIPLEX 3010 SFF	DELL	CG9XBY1	CLA
DELL OPTIPLEX 5400	DELL	8P2HYS3	CLA
DELL OPTIPLEX 5400	DELL	6JSDRT3	CLA
DELL OPTIPLEX 5400	DELL	BHSDRT3	CLA
DELL OPTIPLEX 5400	DELL	CCPDRT3	CLA
DELL OPTIPLEX 5400	DELL	D9PDRT3	CLA
DELL OPTIPLEX 5400	DELL	FHSDRT3	CLA
DELL OPTIPLEX 5490	DELL	7RD4RJ3	CLA
DELL OPTIPLEX 7490	DELL	5RNS2L3	CLA
DELL OPTIPLEX 7490	DELL	6RNS2L3	CLA
DELL OPTIPLEX 7490	DELL	9RNS2L3	CLA
DELL OPTIPLEX 7490	DELL	CQNS2L3	CLA
DELL POWEREDGE T110 II SERVER	DELL	50VLCY1	CLA
PC GATEWAY E-2300 PC	GATEWAY	0035418189	CLA
DELL CHROMEBOOK 11 3100 KIT #1	DELL	J3S0GD3	CLS
DELL CHROMEBOOK 11 3100 KIT #2	DELL	G061GD3	CLS
DELL CHROMEBOOK 11 3100 KIT #3	DELL	43S0GD3	CLS
DELL OPTIPLEX 5400	DELL	JXNM7V3	CLS
DELL OPTIPLEX 5490	DELL	69413Q3	CLS
DELL OPTIPLEX 5490	DELL	8B413Q3	CLS
DELL OPTIPLEX 5490	DELL	6B413Q3	CLS
DELL OPTIPLEX 5490	DELL	21B29R3	CLS
DELL OPTIPLEX 5490	DELL	79413Q3	CLS
DELL OPTIPLEX 5490	DELL	7D713Q3	CLS
DELL OPTIPLEX 5490	DELL	88413Q3	CLS
DELL OPTIPLEX 5490	DELL	89413Q3	CLS
DELL OPTIPLEX 5490	DELL	99413Q3	CLS
DELL OPTIPLEX 5490	DELL	B6413Q3	CLS
DELL OPTIPLEX 5490	DELL	B8413Q3	CLS
DELL OPTIPLEX 5490	DELL	D7413Q3	CLS
DELL OPTIPLEX 5490	DELL	HKGLRN3	CLS
DELL OPTIPLEX 5490	DELL	F7413Q3	CLS
DELL OPTIPLEX 5490	DELL	19413Q3	CLS
DELL OPTIPLEX 5490	DELL	F8413Q3	CLS

DELL OPTIPLEX 5490	DELL	1C413Q3	CLS
DELL OPTIPLEX 5490	DELL	F9413Q3	CLS
DELL OPTIPLEX 5490	DELL	1D713Q3	CLS
DELL OPTIPLEX 5490	DELL	H5413Q3	CLS
DELL OPTIPLEX 5490	DELL	2B413Q3	CLS
DELL OPTIPLEX 5490	DELL	H9413Q3	CLS
DELL OPTIPLEX 5490	DELL	2C413Q3	CLS
DELL OPTIPLEX 5490	DELL	HC713Q3	CLS
DELL OPTIPLEX 5490	DELL	3B413Q3	CLS
DELL OPTIPLEX 5490	DELL	J5413Q3	CLS
DELL OPTIPLEX 5490	DELL	3D713Q3	CLS
DELL OPTIPLEX 5490	DELL	J7413Q3	CLS
DELL OPTIPLEX 5490	DELL	49413Q3	CLS
DELL OPTIPLEX 5490	DELL	JC713Q3	CLS
DELL OPTIPLEX 5490	DELL	4B413Q3	CLS
DELL OPTIPLEX 5490	DELL	7B413Q3	CLS
DELL OPTIPLEX 5490	DELL	5B413Q3	CLS
DELL OPTIPLEX 5490	DELL	C8413Q3	CLS
DELL OPTIPLEX 5490	DELL	J9413Q3	CLS
DELL OPTIPLEX 7490	DELL	1RNS2L3	CLS
DELL OPTIPLEX 7490	DELL	BRNS2L3	CLS
DELL POWEREDGE T110 II SERVER	DELL	62PSFZ1	CLS
HP SMART BUY PROBOOK 4520s	HP	2CE01809D4	CLS
HP PRO 4300 ALL-IN-ONE	HP	MXL2431MPH	CNT
27" PODIUM STYLE TOUCHSCREEN KIOSK	TOUCH SCREEN	30170831001	CNT
Apple iMac 14,2	APPLE	D25P60TDF8JC	CNT
Apple iMac 14,2	APPLE	D25P60TCF8JC	CNT
APPLE MAC MINI	APPLE	C07RP0QZG1J2	CNT
APPLE MACBOOK PRO	APPLE	C02XHK0BJG5J	CNT
CHROMEBOOK G3	HP	5BB50941VZ	CNT
CHROMEBOOK G3	HP	5BB5094243	CNT
CHROMEBOOK G3	HP	5CB5094230	CNT
DELL CHROMEBOOK 11 3100	DELL	52B90H3	CNT
DELL CHROMEBOOK 11 3100	DELL	54GCXQ3	CNT
DELL CHROMEBOOK 11 3100	DELL	H7780H3	CNT
DELL CHROMEBOOK 11 3100	DELL	66P8XQ3	CNT
DELL CHROMEBOOK 11 3100	DELL	CSVMHM3	CNT
DELL CHROMEBOOK 11 3100	DELL	6HT3XQ3	CNT
DELL CHROMEBOOK 11 3100	DELL	H37NHM3	CNT
DELL CHROMEBOOK 11 3100	DELL	B2G3XQ3	CNT
DELL CHROMEBOOK 11 3100	DELL	JF1NHM3	CNT
DELL CHROMEBOOK 11 3100	DELL	BRHCXQ3	CNT
DELL CHROMEBOOK 11 3100	DELL	D154XQ3	CNT
DELL CHROMEBOOK 11 3100	DELL	FGZ3XQ3	CNT
DELL CHROMEBOOK 11 3100	DELL	FYB4XQ3	CNT
DELL CHROMEBOOK 11 3100	DELL	GJT7XQ3	CNT
DELL CHROMEBOOK 11 3100	DELL	1Y790H3	CNT
DELL LATITUDE			CNT
DELL LATITUDE 3510 BTX	DELL	4MQXR93	CNT
DELL LATITUDE 3510 BTX	DELL	HXMXR93	CNT
DELL LATITUDE 3510 BTX	DELL	B0NXR93	CNT
DELL LATITUDE 3540 XCTO	DELL	7R2FLS3	CNT

DELL LATITUDE 3540 XCTO	DELL	7BFHYW3	CNT
DELL LATITUDE 3540 XCTO	DELL	6R2FLS3	CNT
DELL LATITUDE 3540 XCTO	DELL	2R2FLS3	CNT
DELL LATITUDE 3540 XCTO	DELL	3R2FLS3	CNT
DELL LATITUDE 3540 XCTO	DELL	9R2FLS3	CNT
DELL LATITUDE 3540 XCTO	DELL	4R2FLS3	CNT
DELL LATITUDE 3540 XCTO	DELL	5R2FLS3	CNT
DELL LATITUDE 3540 XCTO	DELL	B25XYW3	CNT
DELL LATITUDE 3540 XCTO	DELL	8R2FLS3	CNT
DELL LATITUDE 3540 XCTO	DELL	925XYW3	CNT
DELL OPTIPLEX 5050 MT XCTO	DELL	4BNRHK2	CNT
DELL OPTIPLEX 5260	DELL	BVJMNY2	CNT
DELL OPTIPLEX 5260	DELL	8MNP7X2	CNT
DELL OPTIPLEX 5260	DELL	BVJNNY2	CNT
DELL OPTIPLEX 5260	DELL	8MNQ7X2	CNT
DELL OPTIPLEX 5260	DELL	BVJPNY2	CNT
DELL OPTIPLEX 5260	DELL	8MPK7X2	CNT
DELL OPTIPLEX 5260	DELL	1LZ3N42	CNT
DELL OPTIPLEX 5260	DELL	BVKLNY2	CNT
DELL OPTIPLEX 5260	DELL	8MPL7X2	CNT
DELL OPTIPLEX 5260	DELL	4WZ3N42	CNT
DELL OPTIPLEX 5260	DELL	BVKMNY2	CNT
DELL OPTIPLEX 5260	DELL	5YBNP42	CNT
DELL OPTIPLEX 5260	DELL	BVKNNY2	CNT
DELL OPTIPLEX 5260	DELL	H55JPX2	CNT
DELL OPTIPLEX 5260	DELL	9QZ3N42	CNT
DELL OPTIPLEX 5260	DELL	BVKPNY2	CNT
DELL OPTIPLEX 5260	DELL	H55KPX2	CNT
DELL OPTIPLEX 5260	DELL	HYBNP42	CNT
DELL OPTIPLEX 5260	DELL	BVLLNY2	CNT
DELL OPTIPLEX 5260	DELL	H55LPX2	CNT
DELL OPTIPLEX 5260	DELL	BVLMNY2	CNT
DELL OPTIPLEX 5260	DELL	BVLNNY2	CNT
DELL OPTIPLEX 5260	DELL	BVLPNY2	CNT
DELL OPTIPLEX 5260	DELL	BVDNNY2	CNT
DELL OPTIPLEX 5260	DELL	FXHTDW2	CNT
DELL OPTIPLEX 5260	DELL	BVMLNY2	CNT
DELL OPTIPLEX 5260	DELL	BVDPNY2	CNT
DELL OPTIPLEX 5260	DELL	FXHVDW2	CNT
DELL OPTIPLEX 5260	DELL	BVDMNY2	CNT
DELL OPTIPLEX 5260	DELL	BVFMNY2	CNT
DELL OPTIPLEX 5260	DELL	FXHWDW2	CNT
DELL OPTIPLEX 5260	DELL	BVFNNY2	CNT
DELL OPTIPLEX 5260	DELL	FXJTDW2	CNT
DELL OPTIPLEX 5260	DELL	BVFPNY2	CNT
DELL OPTIPLEX 5260	DELL	FXKVDW2	CNT
DELL OPTIPLEX 5260	DELL	BVGMNY2	CNT
DELL OPTIPLEX 5260	DELL	FXKVDW2	CNT
DELL OPTIPLEX 5260	DELL	BVGNNY2	CNT
DELL OPTIPLEX 5260	DELL	FXPNDW2	CNT
DELL OPTIPLEX 5260	DELL	BVGPNY2	CNT
DELL OPTIPLEX 5260	DELL	8MMQ7X2	CNT

DELL OPTIPLEX 5260	DELL	BVHMNY2	CNT
DELL OPTIPLEX 5260	DELL	8MMR7X2	CNT
DELL OPTIPLEX 5260	DELL	BVHNNY2	CNT
DELL OPTIPLEX 5260	DELL	8MNL7X2	CNT
DELL OPTIPLEX 5260	DELL	BVHPNY2	CNT
DELL OPTIPLEX 5260	DELL	8MNN7X2	CNT
DELL OPTIPLEX 5270	DELL	CBPL9Z2	CNT
DELL OPTIPLEX 5270	DELL	2SC1613	CNT
DELL OPTIPLEX 5270	DELL	2SC2613	CNT
DELL OPTIPLEX 5270	DELL	2SC3613	CNT
DELL OPTIPLEX 5270	DELL	GLL2H03	CNT
DELL OPTIPLEX 5270	DELL	2SC5613	CNT
DELL OPTIPLEX 5270	DELL	CBMP9Z2	CNT
DELL OPTIPLEX 5270	DELL	CBNL9Z2	CNT
DELL OPTIPLEX 5270	DELL	CBNM9Z2	CNT
DELL OPTIPLEX 5270	DELL	CBNN9Z2	CNT
DELL OPTIPLEX 5400	DELL	GZWVMW3	CNT
DELL OPTIPLEX 5400	DELL	DT43DX3	CNT
DELL OPTIPLEX 5400	DELL	4YNM7V3	CNT
DELL OPTIPLEX 5400	DELL	8P13DX3	CNT
DELL OPTIPLEX 5400	DELL	1BPDRT3	CNT
DELL OPTIPLEX 5400	DELL	3P13DX3	CNT
DELL OPTIPLEX 5400	DELL	JW43DX3	CNT
DELL OPTIPLEX 5400	DELL	HYWVMW3	CNT
DELL OPTIPLEX 5400	DELL	DV43DX3	CNT
DELL OPTIPLEX 5400	DELL	63PM7V3	CNT
DELL OPTIPLEX 5400	DELL	8R43DX3	CNT
DELL OPTIPLEX 5400	DELL	1GSDRT3	CNT
DELL OPTIPLEX 5400	DELL	3R43DX3	CNT
DELL OPTIPLEX 5400	DELL	J20WMW3	CNT
DELL OPTIPLEX 5400	DELL	DW43DX3	CNT
DELL OPTIPLEX 5400	DELL	6ZNM7V3	CNT
DELL OPTIPLEX 5400	DELL	8S43DX3	CNT
DELL OPTIPLEX 5400	DELL	1HSDRT3	CNT
DELL OPTIPLEX 5400	DELL	3T43DX3	CNT
DELL OPTIPLEX 5400	DELL	FQ43DX3	CNT
DELL OPTIPLEX 5400	DELL	74SM7V3	CNT
DELL OPTIPLEX 5400	DELL	8T43DX3	CNT
DELL OPTIPLEX 5400	DELL	3CPDRT3	CNT
DELL OPTIPLEX 5400	DELL	3V43DX3	CNT
DELL OPTIPLEX 5400	DELL	FS43DX3	CNT
DELL OPTIPLEX 5400	DELL	93PM7V3	CNT
DELL OPTIPLEX 5400	DELL	8V43DX3	CNT
DELL OPTIPLEX 5400	DELL	3DPDRT3	CNT
DELL OPTIPLEX 5400	DELL	3W43DX3	CNT
DELL OPTIPLEX 5400	DELL	FT43DX3	CNT
DELL OPTIPLEX 5400	DELL	C0PM7V3	CNT
DELL OPTIPLEX 5400	DELL	9P13DX3	CNT
DELL OPTIPLEX 5400	DELL	3HSDRT3	CNT
DELL OPTIPLEX 5400	DELL	4S43DX3	CNT
DELL OPTIPLEX 5400	DELL	FV43DX3	CNT
DELL OPTIPLEX 5400	DELL	C1PM7V3	CNT

DELL OPTIPLEX 5400	DELL	9Q43DX3	CNT
DELL OPTIPLEX 5400	DELL	5BPDRT3	CNT
DELL OPTIPLEX 5400	DELL	4T43DX3	CNT
DELL OPTIPLEX 5400	DELL	GQ43DX3	CNT
DELL OPTIPLEX 5400	DELL	DYNM7V3	CNT
DELL OPTIPLEX 5400	DELL	9R43DX3	CNT
DELL OPTIPLEX 5400	DELL	5CPDRT3	CNT
DELL OPTIPLEX 5400	DELL	4V43DX3	CNT
DELL OPTIPLEX 5400	DELL	GR43DX3	CNT
DELL OPTIPLEX 5400	DELL	J0PM7V3	CNT
DELL OPTIPLEX 5400	DELL	9S43DX3	CNT
DELL OPTIPLEX 5400	DELL	6BPDRT3	CNT
DELL OPTIPLEX 5400	DELL	4W43DX3	CNT
DELL OPTIPLEX 5400	DELL	GS43DX3	CNT
DELL OPTIPLEX 5400	DELL	140WMW3	CNT
DELL OPTIPLEX 5400	DELL	9V43DX3	CNT
DELL OPTIPLEX 5400	DELL	6CPDRT3	CNT
DELL OPTIPLEX 5400	DELL	5P13DX3	CNT
DELL OPTIPLEX 5400	DELL	GT43DX3	CNT
DELL OPTIPLEX 5400	DELL	240WMW3	CNT
DELL OPTIPLEX 5400	DELL	BP13DX3	CNT
DELL OPTIPLEX 5400	DELL	6GSDRT3	CNT
DELL OPTIPLEX 5400	DELL	5T43DX3	CNT
DELL OPTIPLEX 5400	DELL	1R43DX3	CNT
DELL OPTIPLEX 5400	DELL	GV43DX3	CNT
DELL OPTIPLEX 5400	DELL	3YWVMW3	CNT
DELL OPTIPLEX 5400	DELL	BQ43DX3	CNT
DELL OPTIPLEX 5400	DELL	7BPDRT3	CNT
DELL OPTIPLEX 5400	DELL	5V43DX3	CNT
DELL OPTIPLEX 5400	DELL	1R5HYS3	CNT
DELL OPTIPLEX 5400	DELL	1S43DX3	CNT
DELL OPTIPLEX 5400	DELL	GW43DX3	CNT
DELL OPTIPLEX 5400	DELL	410WMW3	CNT
DELL OPTIPLEX 5400	DELL	BR43DX3	CNT
DELL OPTIPLEX 5400	DELL	8CPDRT3	CNT
DELL OPTIPLEX 5400	DELL	5W43DX3	CNT
DELL OPTIPLEX 5400	DELL	3N2HYS3	CNT
DELL OPTIPLEX 5400	DELL	1T43DX3	CNT
DELL OPTIPLEX 5400	DELL	HQ43DX3	CNT
DELL OPTIPLEX 5400	DELL	530WMW3	CNT
DELL OPTIPLEX 5400	DELL	BS43DX3	CNT
DELL OPTIPLEX 5400	DELL	9BPDRT3	CNT
DELL OPTIPLEX 5400	DELL	6T43DX3	CNT
DELL OPTIPLEX 5400	DELL	4T5HYS3	CNT
DELL OPTIPLEX 5400	DELL	1V43DX3	CNT
DELL OPTIPLEX 5400	DELL	HR43DX3	CNT
DELL OPTIPLEX 5400	DELL	530WMW3	CNT
DELL OPTIPLEX 5400	DELL	BT43DX3	CNT
DELL OPTIPLEX 5400	DELL	9HSDRT3	CNT
DELL OPTIPLEX 5400	DELL	6V43DX3	CNT
DELL OPTIPLEX 5400	DELL	7N2HYS3	CNT
DELL OPTIPLEX 5400	DELL	1W43DX3	CNT

DELL OPTIPLEX 5400	DELL	HS43DX3	CNT
DELL OPTIPLEX 5400	DELL	620WMW3	CNT
DELL OPTIPLEX 5400	DELL	BW43DX3	CNT
DELL OPTIPLEX 5400	DELL	CBPDRT3	CNT
DELL OPTIPLEX 5400	DELL	6W43DX3	CNT
DELL OPTIPLEX 5400	DELL	7T5HYS3	CNT
DELL OPTIPLEX 5400	DELL	1X43DX3	CNT
DELL OPTIPLEX 5400	DELL	HT43DX3	CNT
DELL OPTIPLEX 5400	DELL	730WMW3	CNT
DELL OPTIPLEX 5400	DELL	CS43DX3	CNT
DELL OPTIPLEX 5400	DELL	CGSDRT3	CNT
DELL OPTIPLEX 5400	DELL	7P13DX3	CNT
DELL OPTIPLEX 5400	DELL	8Q5HYS3	CNT
DELL OPTIPLEX 5400	DELL	2R43DX3	CNT
DELL OPTIPLEX 5400	DELL	HV43DX3	CNT
DELL OPTIPLEX 5400	DELL	7YWVMW3	CNT
DELL OPTIPLEX 5400	DELL	CV43DX3	CNT
DELL OPTIPLEX 5400	DELL	1YNM7V3	CNT
DELL OPTIPLEX 5400	DELL	7Q43DX3	CNT
DELL OPTIPLEX 5400	DELL	9R5HYS3	CNT
DELL OPTIPLEX 5400	DELL	2S43DX3	CNT
DELL OPTIPLEX 5400	DELL	HW43DX3	CNT
DELL OPTIPLEX 5400	DELL	FXWVMW3	CNT
DELL OPTIPLEX 5400	DELL	CW43DX3	CNT
DELL OPTIPLEX 5400	DELL	20PM7V3	CNT
DELL OPTIPLEX 5400	DELL	7R43DX3	CNT
DELL OPTIPLEX 5400	DELL	9T5HYS3	CNT
DELL OPTIPLEX 5400	DELL	2T43DX3	CNT
DELL OPTIPLEX 5400	DELL	JQ43DX3	CNT
DELL OPTIPLEX 5400	DELL	G30WMW3	CNT
DELL OPTIPLEX 5400	DELL	DQ43DX3	CNT
DELL OPTIPLEX 5400	DELL	2YNM7V3	CNT
DELL OPTIPLEX 5400	DELL	7T43DX3	CNT
DELL OPTIPLEX 5400	DELL	BS5HYS3	CNT
DELL OPTIPLEX 5400	DELL	2V43DX3	CNT
DELL OPTIPLEX 5400	DELL	JR43DX3	CNT
DELL OPTIPLEX 5400	DELL	GXWVMW3	CNT
DELL OPTIPLEX 5400	DELL	DR43DX3	CNT
DELL OPTIPLEX 5400	DELL	3YNM7V3	CNT
DELL OPTIPLEX 5400	DELL	7W43DX3	CNT
DELL OPTIPLEX 5400	DELL	CT5HYS3	CNT
DELL OPTIPLEX 5400	DELL	2W43DX3	CNT
DELL OPTIPLEX 5400	DELL	JT43DX3	CNT
DELL OPTIPLEX 5490	DELL	H6413Q3	CNT
DELL OPTIPLEX 5490	DELL	FM08RN3	CNT
DELL OPTIPLEX 5490	DELL	4JGLRN3	CNT
DELL OPTIPLEX 5490	DELL	H7413Q3	CNT
DELL OPTIPLEX 5490	DELL	1RD4RJ3	CNT
DELL OPTIPLEX 5490	DELL	4RKLRN3	CNT
DELL OPTIPLEX 5490	DELL	H8413Q3	CNT
DELL OPTIPLEX 5490	DELL	2QD4RJ3	CNT
DELL OPTIPLEX 5490	DELL	29413Q3	CNT

DELL OPTIPLEX 5490	DELL	5RKLRN3	CNT
DELL OPTIPLEX 5490	DELL	9413Q3	CNT
DELL OPTIPLEX 5490	DELL	4RD4RJ3	CNT
DELL OPTIPLEX 5490	DELL	36413Q3	CNT
DELL OPTIPLEX 5490	DELL	6RKLRN3	CNT
DELL OPTIPLEX 5490	DELL	JB413Q3	CNT
DELL OPTIPLEX 5490	DELL	5QD4RJ3	CNT
DELL OPTIPLEX 5490	DELL	37413Q3	CNT
DELL OPTIPLEX 5490	DELL	164LTH3	CNT
DELL OPTIPLEX 5490	DELL	7KGLRN3	CNT
DELL OPTIPLEX 5490	DELL	2D713Q3	CNT
DELL OPTIPLEX 5490	DELL	6RD4RJ3	CNT
DELL OPTIPLEX 5490	DELL	4D713Q3	CNT
DELL OPTIPLEX 5490	DELL	364LTH3	CNT
DELL OPTIPLEX 5490	DELL	8HGLRN3	CNT
DELL OPTIPLEX 5490	DELL	68413Q3	CNT
DELL OPTIPLEX 5490	DELL	7QD4RJ3	CNT
DELL OPTIPLEX 5490	DELL	56413Q3	CNT
DELL OPTIPLEX 5490	DELL	374LTH3	CNT
DELL OPTIPLEX 5490	DELL	8KGLRN3	CNT
DELL OPTIPLEX 5490	DELL	12B29R3	CNT
DELL OPTIPLEX 5490	DELL	9QD4RJ3	CNT
DELL OPTIPLEX 5490	DELL	59413Q3	CNT
DELL OPTIPLEX 5490	DELL	464LTH3	CNT
DELL OPTIPLEX 5490	DELL	CKGLRN3	CNT
DELL OPTIPLEX 5490	DELL	2Z629R3	CNT
DELL OPTIPLEX 5490	DELL	BRD4RJ3	CNT
DELL OPTIPLEX 5490	DELL	5D713Q3	CNT
DELL OPTIPLEX 5490	DELL	474LTH3	CNT
DELL OPTIPLEX 5490	DELL	CRKLRN3	CNT
DELL OPTIPLEX 5490	DELL	3BY29R3	CNT
DELL OPTIPLEX 5490	DELL	CPD4RJ3	CNT
DELL OPTIPLEX 5490	DELL	78413Q3	CNT
DELL OPTIPLEX 5490	DELL	564LTH3	CNT
DELL OPTIPLEX 5490	DELL	CSKLRN3	CNT
DELL OPTIPLEX 5490	DELL	8SHT5S3	CNT
DELL OPTIPLEX 5490	DELL	48Y29R3	CNT
DELL OPTIPLEX 5490	DELL	FPD4RJ3	CNT
DELL OPTIPLEX 5490	DELL	8B413Q3	CNT
DELL OPTIPLEX 5490	DELL	664LTH3	CNT
DELL OPTIPLEX 5490	DELL	DHGLRN3	CNT
DELL OPTIPLEX 5490	DELL	CSHT5S3	CNT
DELL OPTIPLEX 5490	DELL	59Y29R3	CNT
DELL OPTIPLEX 5490	DELL	FRD4RJ3	CNT
DELL OPTIPLEX 5490	DELL	96413Q3	CNT
DELL OPTIPLEX 5490	DELL	764LTH3	CNT
DELL OPTIPLEX 5490	DELL	FM08RN3	CNT
DELL OPTIPLEX 5490	DELL	61B29R3	CNT
DELL OPTIPLEX 5490	DELL	GPD4RJ3	CNT
DELL OPTIPLEX 5490	DELL	9B413Q3	CNT
DELL OPTIPLEX 5490	DELL	864LTH3	CNT
DELL OPTIPLEX 5490	DELL	GHGLRN3	CNT

DELL OPTIPLEX 5490	DELL	7BY29R3	CNT
DELL OPTIPLEX 5490	DELL	GQD4RJ3	CNT
DELL OPTIPLEX 5490	DELL	9D713Q3	CNT
DELL OPTIPLEX 5490	DELL	964LTH3	CNT
DELL OPTIPLEX 5490	DELL	GJGLRN3	CNT
DELL OPTIPLEX 5490	DELL	9BY29R3	CNT
DELL OPTIPLEX 5490	DELL	GRD4RJ3	CNT
DELL OPTIPLEX 5490	DELL	B7413Q3	CNT
DELL OPTIPLEX 5490	DELL	B64LTH3	CNT
DELL OPTIPLEX 5490	DELL	GM08RN3	CNT
DELL OPTIPLEX 5490	DELL	DY629R3	CNT
DELL OPTIPLEX 5490	DELL	HPD4RJ3	CNT
DELL OPTIPLEX 5490	DELL	C7413Q3	CNT
DELL OPTIPLEX 5490	DELL	C64LTH3	CNT
DELL OPTIPLEX 5490	DELL	GSKLRN3	CNT
DELL OPTIPLEX 5490	DELL	F1B29R3	CNT
DELL OPTIPLEX 5490	DELL	HQD4RJ3	CNT
DELL OPTIPLEX 5490	DELL	B8413Q3	CNT
DELL OPTIPLEX 5490	DELL	F54LTH3	CNT
DELL OPTIPLEX 5490	DELL	HHGLRN3	CNT
DELL OPTIPLEX 5490	DELL	FY629R3	CNT
DELL OPTIPLEX 5490	DELL	JPD4RJ3	CNT
DELL OPTIPLEX 5490	DELL	D6413Q3	CNT
DELL OPTIPLEX 5490	DELL	F64LTH3	CNT
DELL OPTIPLEX 5490	DELL	HJGLRN3	CNT
DELL OPTIPLEX 5490	DELL	G0B29R3	CNT
DELL OPTIPLEX 5490	DELL	JRD4RJ3	CNT
DELL OPTIPLEX 5490	DELL	D9413Q3	CNT
DELL OPTIPLEX 5490	DELL	G54LTH3	CNT
DELL OPTIPLEX 5490	DELL	HRKLRN3	CNT
DELL OPTIPLEX 5490	DELL	1RKLRN3	CNT
DELL OPTIPLEX 5490	DELL	J1B29R3	CNT
DELL OPTIPLEX 5490	DELL	F6413Q3	CNT
DELL OPTIPLEX 5490	DELL	H64LTH3	CNT
DELL OPTIPLEX 5490	DELL	JHGLRN3	CNT
DELL OPTIPLEX 5490	DELL	3RKLRN3	CNT
DELL OPTIPLEX 5490	DELL	J9Y29R3	CNT
DELL OPTIPLEX 5490	DELL	G9413Q3	CNT
DELL OPTIPLEX 5490	DELL	J64LTH3	CNT
DELL OPTIPLEX 5490	DELL	GM08RN3	CNT
DELL OPTIPLEX 5490	DELL	3SKLRN3	CNT
DELL OPTIPLEX 7450	DELL	4H2DXQ2	CNT
DELL OPTIPLEX 7450	DELL	9FCW0Q2	CNT
DELL OPTIPLEX 7450	DELL	9FCX0Q2	CNT
DELL OPTIPLEX 7450	DELL	6G80JQ2	CNT
DELL OPTIPLEX 7450	DELL	6G8XLR2	CNT
DELL OPTIPLEX 7450	DELL	6G8WLR2	CNT
DELL OPTIPLEX 7460	DELL	CYGXD2	CNT
DELL OPTIPLEX 7460	DELL	C4XY2W2	CNT
DELL OPTIPLEX 7460	DELL	2CDBPX2	CNT
DELL OPTIPLEX 7460	DELL	C51Z2W2	CNT
DELL OPTIPLEX 7460	DELL	2CL9PX2	CNT

DELL OPTIPLEX 7460	DELL	52DSP42	CNT
DELL OPTIPLEX 7460	DELL	4P1QN42	CNT
DELL OPTIPLEX 7460	DELL	5Z1QN42	CNT
DELL OPTIPLEX 7460	DELL	JR1QN42	CNT
DELL OPTIPLEX 7470	DELL	J7YDSZ2	CNT
DELL OPTIPLEX 7470	DELL	J7ZK903	CNT
DELL OPTIPLEX 7470	DELL	J7ZN903	CNT
DELL OPTIPLEX 7470	DELL	J7ZXRZ2	CNT
DELL OPTIPLEX 7490	DELL	1CZPWP3	CNT
DELL OPTIPLEX 7490	DELL	2BZPWP3	CNT
DELL OPTIPLEX 7490	DELL	48ZPWP3	CNT
DELL OPTIPLEX 7490	DELL	49ZPWP3	CNT
DELL OPTIPLEX 7490	DELL	59ZPWP3	CNT
DELL OPTIPLEX 7490	DELL		CNT
DELL OPTIPLEX 7490	DELL	68ZPWP3	CNT
DELL OPTIPLEX 7490	DELL	69ZPWP3	CNT
DELL OPTIPLEX 7490	DELL	78ZPWP3	CNT
DELL OPTIPLEX 7490	DELL	7BZPWP3	CNT
DELL OPTIPLEX 7490	DELL	9BZPWP3	CNT
DELL OPTIPLEX 7490	DELL	C8ZPWP3	CNT
DELL OPTIPLEX 7490	DELL	CBZPWP3	CNT
DELL OPTIPLEX 7490	DELL	D8ZPWP3	CNT
DELL OPTIPLEX 7490	DELL		CNT
DELL OPTIPLEX 9020 SFF	DELL	4S51Q52	CNT
DELL OPTIPLEX Plus 7410	DELL	7CMXNZ3	CNT
DELL OPTIPLEX Plus 7410	DELL	27MXNZ3	CNT
DELL OPTIPLEX Plus 7410	DELL	G5JXNZ3	CNT
DELL OPTIPLEX Plus 7410	DELL	39MXNZ3	CNT
DELL OPTIPLEX Plus 7410	DELL	5CMXNZ3	CNT
DELL OPTIPLEX Plus 7410	DELL	17MXNZ3	CNT
DELL OPTIPLEX Plus 7410	DELL	G6MXNZ3	CNT
DELL OPTIPLEX Plus 7410	DELL	D9MXNZ3	CNT
DELL OPTIPLEX Plus 7410	DELL	C9MXNZ3	CNT
DELL OPTIPLEX Plus 7410	DELL	H6MXNZ3	CNT
DELL OPTIPLEX Plus 7410	DELL	H8MXNZ3	CNT
DELL OPTIPLEX Plus 7410	DELL	2CMXNZ3	CNT
DELL OPTIPLEX Plus 7410	DELL	BBMXNZ3	CNT
DELL OPTIPLEX Plus 7410	DELL	C7MXNZ3	CNT
DELL OPTIPLEX Plus 7410	DELL	9CMXNZ3	CNT
DELL OPTIPLEX Plus 7410	DELL	J6MXNZ3	CNT
DELL OPTIPLEX Plus 7410	DELL	7DMXNZ3	CNT
DELL OPTIPLEX Plus 7410	DELL	18MXNZ3	CNT
DELL OPTIPLEX Plus 7410	DELL	38MXNZ3	CNT
DELL OPTIPLEX Plus 7410	DELL	99MXNZ3	CNT
DELL OPTIPLEX Plus 7410	DELL	19MXNZ3	CNT
DELL OPTIPLEX Plus 7410	DELL	D8MXNZ3	CNT
DELL OPTIPLEX Plus 7410	DELL	CCMXNZ3	CNT
DELL OPTIPLEX Plus 7410	DELL	58MXNZ3	CNT
DELL OPTIPLEX Plus 7410	DELL	6DMXNZ3	CNT
DELL OPTIPLEX Plus 7410	DELL	J7MXNZ3	CNT
DELL OPTIPLEX Plus 7410	DELL	D5JXNZ3	CNT
DELL OPTIPLEX Plus 7410	DELL	68MXNZ3	CNT

DELL OPTIPLEX Plus 7410	DELL	1BMXNZ3	CNT
DELL OPTIPLEX Plus 7410	DELL	MXNZ3	CNT
DELL OPTIPLEX Plus 7410	DELL	2BMXNZ3	CNT
DELL OPTIPLEX Plus 7410	DELL	JBMXNZ3	CNT
DELL OPTIPLEX Plus 7410	DELL	88MXNZ3	CNT
DELL OPTIPLEX Plus 7410	DELL	89MXNZ3	CNT
DELL OPTIPLEX Plus 7410	DELL	1CMXNZ3	CNT
DELL OPTIPLEX Plus 7410	DELL	J9MXNZ3	CNT
DELL OPTIPLEX Plus 7410	DELL	47MXNZ3	CNT
DELL OPTIPLEX Plus 7410	DELL	8BMXNZ3	CNT
DELL OPTIPLEX Plus 7410	DELL	GBMXNZ3	CNT
DELL OPTIPLEX Plus 7410	DELL	9DMXNZ3	CNT
DELL OPTIPLEX Plus 7410	DELL	77MXNZ3	CNT
DELL OPTIPLEX Plus 7410	DELL	CBMXNZ3	CNT
DELL OPTIPLEX Plus 7410	DELL	5BMXNZ3	CNT
DELL OPTIPLEX Plus 7410	DELL	H9MXNZ3	CNT
DELL OPTIPLEX Plus 7410	DELL	97MXNZ3	CNT
DELL OPTIPLEX Plus 7410	DELL	B9MXNZ3	CNT
DELL OPTIPLEX Plus 7410	DELL	6BMXNZ3	CNT
DELL OPTIPLEX Plus 7410	DELL	HBMXNZ3	CNT
DELL OPTIPLEX Plus 7410	DELL	98MXNZ3	CNT
DELL OPTIPLEX Plus 7410	DELL	67MXNZ3	CNT
DELL OPTIPLEX Plus 7410	DELL	4CMXNZ3	CNT
DELL OPTIPLEX Plus 7410	DELL	JCMXNZ3	CNT
DELL OPTIPLEX Plus 7410	DELL	79MXNZ3	CNT
DELL OPTIPLEX Plus 7410	DELL	28MXNZ3	CNT
DELL OPTIPLEX Plus 7410	DELL	48MXNZ3	CNT
DELL OPTIPLEX Plus 7410	DELL	16JXNZ3	CNT
DELL OPTIPLEX Plus 7410	DELL	CDMXNZ3	CNT
DELL OPTIPLEX Plus 7410	DELL	B8MXNZ3	CNT
DELL OPTIPLEX Plus 7410	DELL	29MXNZ3	CNT
DELL OPTIPLEX Plus 7410	DELL	F5JXNZ3	CNT
DELL OPTIPLEX Plus 7410	DELL	6CMXNZ3	CNT
DELL OPTIPLEX Plus 7410	DELL	BCMNXZ3	CNT
DELL OPTIPLEX Plus 7410	DELL	B7MXNZ3	CNT
DELL OPTIPLEX Plus 7410	DELL	37MXNZ3	CNT
DELL OPTIPLEX Plus 7410	DELL	J5JXNZ3	CNT
DELL OPTIPLEX Plus 7410	DELL	4DMXNZ3	CNT
DELL OPTIPLEX Plus 7410	DELL	3DMXNZ3	CNT
DELL OPTIPLEX Plus 7410	DELL	69MXNZ3	CNT
DELL OPTIPLEX Plus 7410	DELL	GCMXNZ3	CNT
DELL OPTIPLEX Plus 7410	DELL	H7MXNZ3	CNT
DELL OPTIPLEX Plus 7410	DELL	3BMXNZ3	CNT
DELL OPTIPLEX Plus 7410	DELL	3CMXNZ3	CNT
DELL OPTIPLEX Plus 7410	DELL	H5JXNZ3	CNT
DELL OPTIPLEX Plus 7410	DELL	D7MXNZ3	CNT
DELL OPTIPLEX Plus 7410	DELL	78MXNZ3	CNT
DELL OPTIPLEX Plus 7410	DELL	87MXNZ3	CNT
DELL OPTIPLEX Plus 7410	DELL	DDMXNZ3	CNT
DELL OPTIPLEX Plus 7410	DELL	FBMXNZ3	CNT
DELL OPTIPLEX Plus 7410	DELL	G7MXNZ3	CNT
DELL OPTIPLEX Plus 7410	DELL	G8MXNZ3	CNT

DELL OPTIPLEX Plus 7410	DELL	4BMXNZ3	CNT
DELL OPTIPLEX Plus 7410	DELL	BDMXNZ3	CNT
DELL OPTIPLEX Plus 7410	DELL	J8MXNZ3	CNT
DELL OPTIPLEX Plus 7410	DELL	F8MXNZ3	CNT
DELL OPTIPLEX Plus 7410	DELL	7BMXNZ3	CNT
DELL OPTIPLEX Plus 7410	DELL	F7MXNZ3	CNT
DELL OPTIPLEX Plus 7410	DELL	FCMXNZ3	CNT
DELL OPTIPLEX Plus 7410	DELL	DBMXNZ3	CNT
DELL OPTIPLEX Plus 7410	DELL	9BMXNZ3	CNT
DELL OPTIPLEX Plus 7410	DELL	49MXNZ3	CNT
DELL OPTIPLEX Plus 7410	DELL	DCMXNZ3	CNT
DELL OPTIPLEX Plus 7410	DELL	2DMXNZ3	CNT
DELL OPTIPLEX Plus 7410	DELL	C8MXNZ3	CNT
DELL OPTIPLEX Plus 7410	DELL	5DMXNZ3	CNT
DELL OPTIPLEX Plus 7410	DELL	57MXNZ3	CNT
DELL OPTIPLEX Plus 7410	DELL	1DMXNZ3	CNT
DELL OPTIPLEX Plus 7410	DELL	G9MXNZ3	CNT
DELL OPTIPLEX Plus 7410	DELL	HCMXNZ3	CNT
DELL OPTIPLEX Plus 7410	DELL	F9MXNZ3	CNT
DELL OPTIPLEX Plus 7410	DELL	59MXNZ3	CNT
DELL OPTIPLEX Plus 7410	DELL	8CMXNZ3	CNT
DELL OPTIPLEX SFF	DELL	36CLWX3	CNT
DELL OPTIPLEX SFF	DELL	46CLWX3	CNT
DELL OPTIPLEX SFF	DELL	56CLWX3	CNT
DELL OPTIPLEX SFF	DELL	66CLWX3	CNT
DELL OPTIPLEX SFF	DELL	76CLWX3	CNT
DELL OPTIPLEX SFF	DELL	86CLWX3	CNT
DELL OPTIPLEX SFF	DELL	96CLWX3	CNT
DELL OPTIPLEX SFF	DELL	B6CLWX3	CNT
DELL POWER EDGE R630 SERVER	DELL	HYP5S2	CNT
DELL POWEREDGE R230 SERVER	DELL	F8H8KH2	CNT
DELL POWEREDGE R230 SERVER	DELL	F8H9KH2	CNT
DELL POWEREDGE R440 SERVER	DELL	9VCD1S2	CNT
DELL POWEREDGE R520 SERVER	DELL	BK729Y1	CNT
DELL POWEREDGE R520 SERVER	DELL		CNT
DELL POWEREDGE R520 SERVER	DELL	2JHTC42	CNT
DELL POWEREDGE R520 SERVER	DELL	2JDVC42	CNT
DELL POWEREDGE R540 SERVER	DELL	83DVJD23	CNT
DELL POWEREDGE R640 SERVER	DELL	7K19HQ2	CNT
DELL POWEREDGE R730 SERVER	DELL	2MQDXM2	CNT
DELL POWEREDGE R740 SERVER	DELL	1CNJ9Z2	CNT
DELL POWEREDGE R740 SERVER	DELL	1CNH9Z2	CNT
DELL POWEREDGE R740 SERVER	DELL	8BLW5S3	CNT
DELL POWEREDGE R750 SERVER	DELL	CBWDRN3	CNT
DELL POWEREDGE T110 II SERVER	DELL	JMXYZ72	CNT
DELL POWEREDGE T110 II SERVER	DELL	62PVFZ1	CNT
DELL POWEREDGE T110 II SERVER	DELL	50WKCY1	CNT
DELL POWEREDGE T110 II SERVER	DELL	3SYJV12	CNT
DELL POWEREDGE T110 II SERVER	DELL	3SZLV12	CNT
DELL POWEREDGE T330 SERVER	DELL	7DSYLR2	CNT
DELL POWEREDGE T340 SERVER	DELL	72F7ZC3	CNT
DELL PRECISION T1650	DELL	342HTV1	CNT

DELL VOSTRO 330 FT 04	DELL	213D5P1	CNT
DELL VOSTRO 330 FT 04	DELL	313D5P1	CNT
DELL VOSTRO 330 FT 04	DELL	513D5P1	CNT
DELL VOSTRO 330 FT 04	DELL	8T0C5P1	CNT
DELL VOSTRO 330 FT 04	DELL	903D5P1	CNT
DELL VOSTRO 330 FT 04	DELL	JT0C5P1	CNT
DELL VOSTRO 330 FT 04	DELL	DT0C5P1	CNT
DELL VOSTRO 330 FT 04	DELL	G03D5P1	CNT
DELL VOSTRO 330 FT 04	DELL	J03D5P1	CNT
DELL VOSTRO 360	DELL	4YNS9Q1	CNT
DELL VOSTRO 360	DELL	JJNS9Q1	CNT
DELL VOSTRO 360	DELL	6XNS9Q1	CNT
DELL VOSTRO 360	DELL	1TWS9Q1	CNT
DELL VOSTRO 360	DELL	7TWS9Q1	CNT
DELL VOSTRO 360	DELL	219R9Q1	CNT
DELL VOSTRO 360	DELL	7XNS9Q1	CNT
DELL VOSTRO 360	DELL	C19R9Q1	CNT
DELL VOSTRO 360	DELL	2VWS9Q1	CNT
DELL VOSTRO 360	DELL	87XS9Q1	CNT
DELL VOSTRO 360	DELL	DNPS9Q1	CNT
DELL VOSTRO 360	DELL	5CNS9Q1	CNT
DELL VOSTRO 360	DELL	8MPS9Q1	CNT
DELL VOSTRO 360	DELL	F9NS9Q1	CNT
DELL VOSTRO 360	DELL	5TWS9Q1	CNT
DELL VOSTRO 360	DELL	8NPS9Q1	CNT
DELL VOSTRO 360	DELL	FMPS9Q1	CNT
DELL VOSTRO 360	DELL	5BNS9Q1	CNT
DELL VOSTRO 360	DELL	8XNS9Q1	CNT
DELL VOSTRO 360	DELL	G1BR9Q1	CNT
DELL VOSTRO 360	DELL	C9NS9Q1	CNT
DELL VOSTRO 360	DELL	8ZNS9Q1	CNT
DELL VOSTRO 360	DELL	GCSP9Q1	CNT
DELL VOSTRO 360	DELL	4JNS9Q1	CNT
DELL VOSTRO 360	DELL	9VWS9Q1	CNT
DELL VOSTRO 360	DELL	GTWS9Q1	CNT
DELL VOSTRO 360	DELL	GBNS9Q1	CNT
DELL VOSTRO 360	DELL	9XNS9Q1	CNT
DELL VOSTRO 360	DELL	GXNS9Q1	CNT
DELL VOSTRO 360	DELL	GVWS9Q1	CNT
DELL VOSTRO 360	DELL	9Z9R9Q1	CNT
DELL VOSTRO 360	DELL	B2BV9Q1	CNT
DELL VOSTRO 360	DELL	HNPS9Q1	CNT
DELL VOSTRO 360	DELL	DXNS9Q1	CNT
DELL VOSTRO 360	DELL	BNPS9Q1	CNT
DELL VOSTRO 360	DELL	HTWS9Q1	CNT
DELL VOSTRO 360	DELL	5VWS9Q1	CNT
DELL VOSTRO 360	DELL	BYNS9Q1	CNT
DELL VOSTRO 360	DELL	JMPS9Q1	CNT
DELL VOSTRO 360	DELL	1X9R9Q1	CNT
DELL VOSTRO 360	DELL	JXNS9Q1	CNT
DELL VOSTRO 360	DELL	3BNS9Q1	CNT
DELL VOSTRO 360	DELL	BXNS9Q1	CNT

DELL VOSTRO 360	DELL	JZ8R9Q1	CNT
DELL VOSTRO 360	DELL	79NS9Q1	CNT
DELL VOSTRO 360	DELL	2PPS9Q1	CNT
DELL VOSTRO 360	DELL	7VWS9Q1	CNT
DELL VOSTRO 360	DELL	2YNS9Q1	CNT
DELL VOSTRO 360	DELL	8BNS9Q1	CNT
DELL VOSTRO 360	DELL	329R9Q1	CNT
DELL VOSTRO 360	DELL	GWBR9Q1	CNT
DELL VOSTRO 360	DELL	3PPS9Q1	CNT
DELL VOSTRO 360	DELL	1HRQ9Q1 see cor	CNT
DELL VOSTRO 360	DELL	6X3Q9Q1	CNT
DELL VOSTRO 360	DELL	J9NS9Q1	CNT
DELL VOSTRO 460 MINI TOWER	DELL	92K4WR1	CNT
DELL VOSTRO 460 MINI TOWER	DELL	92L4WR1	CNT
DELL XPS420 PC	DELL	HNLL1G1	CNT
DELL XPS420 PC	DELL	JNLL1G1	CNT
DELL XPS420 PC	DELL	2PLL1G1	CNT
DELL XPS420 PC	DELL	3PLL1G1	CNT
DELL XPS420 PC	DELL	1PLL1G1	CNT
DIGITAL STORM	DIGITAL STORM	610APRIL66910	CNT
DIGITAL STORM	DIGITAL STORM	6102JAN63762	CNT
HP 8000 Elite Convertible Minitower	HP	2UA0191PR9	CNT
HP 8200 Elite Convertible Minitower	HP	2UA13103Y9	CNT
HP COMPAQ 8100 Elite SFF	HP	2UA04515Q3	CNT
HP COMPAQ 8100 Elite SFF	HP	2UA04515Q6	CNT
HP COMPAQ 8100 Elite SFF	HP	2UA04515Q7	CNT
HP COMPAQ 8100 Elite SFF	HP	2UA04515Q8	CNT
HP COMPAQ 8100 Elite SFF	HP	2UA04515Q9	CNT
HP COMPAQ 8100 Elite SFF	HP	2UA04515Q4	CNT
HP COMPAQ 8100 Elite SFF	HP	2UA04515QB	CNT
HP COMPAQ 8100 Elite SFF	HP	2UA04515Q5	CNT
HTC VIVE	HTC	FA68XAB00400	CNT
MAC Pro	APPLE	F5KP608TF694	CNT
MICROSOFT SURFACE BOOK 3	MICROSOFT	022020114157	CNT
PC APPLE MAC	APPLE	F5178AK	CNT
PC APPLE MAC 512K	APPLE	F5111NUM0001W	CNT
PC APPLE MAC II	APPLE	BCG9GRM5000	CNT
PC APPLE MAC IIGS	APPLE	E805C94A25600	CNT
PC APPLE MAC LC II	APPLE	SG235DXZF07	CNT
PC APPLE MAC LC III	APPLE	LC33622GVA3	CNT
PC APPLE MAC LCIII	APPLE	LC4062UZVA2	CNT
PC APPLE MAC PLUS	APPLE	F710054	CNT
PC APPLE MAC PLUS	APPLE	E90632QM5880	CNT
PC APPLE MAC PLUS	APPLE	F3424STM0001A	CNT
PC APPLE MAC PLUS	APPLE	F715EJMM0001A	CNT
PC APPLE MAC SE	APPLE	F84675EM5010	CNT
PC APPLE MAC SE/30	APPLE	E00805ZM5390	CNT
PC APPLE POWER MAC 6100/60AV	APPLE	XC4412FE258	CNT
PC APPLE VERSAPOINT	APPLE	BP9801-720	CNT
PC SERVER POWER EDGE 2950	DELL	JCHW9D1	CNT
PC SERVER POWER EDGE 2970	DELL	GLVV9D1	CNT
DELL CHROMEBOOK 11 3100	DELL	7PK20H3	COL

DELL CHROMEBOOK 11 3100	DELL	8T820H3	COL
DELL CHROMEBOOK 11 3100	DELL	F4X70H3	COL
DELL POWEREDGE T110 II SERVER	DELL	JN387Y1	COL
DIGITAL STORM	DIGITAL STORM	6102JAN64458	COL
POSIFLEX KS7317	POSIFLEX	KSDA5901	COL
POSIFLEX KS7317	POSIFLEX	KSDB3651	COL
DELL CHROMEBOOK 11 3100	DELL	62X70H3	CON
DELL CHROMEBOOK 11 3100	DELL	F1030H3	CON
DELL CHROMEBOOK 11 3100	DELL	FN670H3	CON
DELL POWEREDGE T110 II SERVER	DELL	HTRX8Z1	CON
DELL VOSTRO 360	DELL	7CNS9Q1	CON
LENOVO THINKPAD EDGE LAPTOP	LENOVO	R9HKW6A	CON
LENOVO THINKPAD EDGE LAPTOP	LENOVO	R9HKW7D	CON
LENOVO THINKPAD EDGE LAPTOP	LENOVO	R9HKW5Z	CON
DELL POWEREDGE T110 II SERVER	DELL	50WJCY1	CRA
DELL VOSTRO 360	DELL	8K9R9Q1	CRA
DELL VOSTRO 360	DELL	BVSP9Q1	CRA
DELL VOSTRO 360	DELL	CMPS9Q1	CRA
DELL CHROMEBOOK 11 3100	DELL	3D580H3	DUD
DELL CHROMEBOOK 11 3100	DELL	76B90H3	DUD
DELL CHROMEBOOK 11 3100	DELL	H5N90H3	DUD
DELL POWEREDGE T110 II SERVER	DELL	3SXLV12	DUD
DELL CHROMEBOOK 11 3100	DELL	522NNJ3	EAU
DELL OPTIPLEX 3010 SFF	DELL	J5HDTW1	EAU
DELL OPTIPLEX 3010 SFF	DELL	J5HFTW1	EAU
DELL OPTIPLEX 5400	DELL	4N2HYS3	EAU
DELL OPTIPLEX 5400	DELL	5M2HYS3	EAU
DELL OPTIPLEX 5400	DELL	5N2HYS3	EAU
DELL OPTIPLEX 5400	DELL	5Q5HYS3	EAU
DELL OPTIPLEX 5400	DELL	6Q5HYS3	EAU
DELL OPTIPLEX 5400	DELL	7M2HYS3	EAU
DELL OPTIPLEX 5400	DELL	7P2HYS3	EAU
DELL OPTIPLEX 5400	DELL	8M2HYS3	EAU
DELL OPTIPLEX 5400	DELL	BT5HYS3	EAU
DELL OPTIPLEX 5400	DELL	DN2HYS3	EAU
DELL OPTIPLEX 5400	DELL	DT5HYS3	EAU
DELL OPTIPLEX 5400	DELL	FS5HYS3	EAU
DELL OPTIPLEX 5400	DELL	GN2HYS3	EAU
DELL OPTIPLEX 5400	DELL	JN2HYS3	EAU
DELL OPTIPLEX 5490	DELL	19Y29R3	EAU
DELL OPTIPLEX 5490	DELL	3Z629R3	EAU
DELL OPTIPLEX 5490	DELL	C1B29R3	EAU
DELL OPTIPLEX 5490	DELL	H8Y29R3	EAU
DELL OPTIPLEX 5490	DELL	D54LTH3	EAU
DELL OPTIPLEX 7460	DELL	B3QB9T2	EAU
DELL OPTIPLEX 7490	DELL	HRNS2L3	EAU
DELL OPTIPLEX 7490	DELL	JQNS2L3	EAU
DELL POWEREDGE T110 II SERVER	DELL	3T0MV12	EAU
DELL CHROMEBOOK 11 3100	DELL	58780H3	ECL
DELL CHROMEBOOK 11 3100	DELL	GWR70H3	ECL
DELL CHROMEBOOK 11 3100	DELL	JWV60H3	ECL
DELL OPTIPLEX 5490	DELL	D8Y29R3	ECL

DELL OPTIPLEX 5490	DELL	F9Y29R3	ECL
DELL OPTIPLEX 7470	DELL	J7ZM903	ECL
DELL OPTIPLEX 7490	DELL	H8ZPWP3	ECL
DELL POWEREDGE T110 II SERVER	DELL	3SYLV12	ECL
DELL VOSTRO 360	DELL	99NS9Q1	ECL
HP SMART BUY PROBOOK 4520s	HP	2CE01809CC	ECL
POSIFLEX KS-7517Z	POSIFLEX	KDSB0948	ECL
DELL VOSTRO 330 FT 04	DELL	F03D5P1	EDL
DELL CHROMEBOOK 11 3100	DELL	2KS70H3	EDN
DELL CHROMEBOOK 11 3100	DELL	4F030H3	EDN
DELL CHROMEBOOK 11 3100	DELL	7FQ70H3	EDN
DELL OPTIPLEX 3010 SFF	DELL	CG9ZBY1	EDN
DELL OPTIPLEX 3010 SFF	DELL	CGBXBY1	EDN
DELL OPTIPLEX 5490	DELL	G7413Q3	EDN
DELL OPTIPLEX 5490	DELL	G8413Q3	EDN
DELL OPTIPLEX 5490	DELL	HB413Q3	EDN
DELL OPTIPLEX 5490	DELL	18Y29R3	EDN
DELL OPTIPLEX 5490	DELL	F8Y29R3	EDN
DELL OPTIPLEX 5490	DELL	17413Q3	EDN
DELL OPTIPLEX 5490	DELL	18413Q3	EDN
DELL OPTIPLEX 5490	DELL	47413Q3	EDN
DELL OPTIPLEX 5490	DELL	77413Q3	EDN
DELL OPTIPLEX 5490	DELL	FB413Q3	EDN
DELL OPTIPLEX 7490	DELL	FRNS2L3	EDN
DELL OPTIPLEX 7490	DELL	GPKS2L3	EDN
DELL POWEREDGE T110 II SERVER	DELL	62QVFZ1	EDN
HP SMART BUY PROBOOK 4520s	HP	2CE0130XZH	EDN
HP SMART BUY PROBOOK 4520s	HP	2CE112041V	EDN
POSIFLEX KS7517	POSIFLEX	KSDB3666	EDN
DELL CHROMEBOOK 11 3100	DELL	DD580H3	EGG
DELL CHROMEBOOK 11 3100	DELL	2H780H3	EGG
DELL CHROMEBOOK 11 3100	DELL	BXR70H3	EGG
DELL OPTIPLEX 3040 SFF	DELL	7L6K8C2	EGG
DELL OPTIPLEX 3040 SFF	DELL	7L8L8C2	EGG
DELL OPTIPLEX 3040 SFF	DELL	7LBF8C2	EGG
DELL OPTIPLEX 3040 SFF	DELL	7LCD8C2	EGG
DELL OPTIPLEX 5400	DELL	2R5HYS3	EGG
DELL OPTIPLEX 5400	DELL	8T5HYS3	EGG
DELL OPTIPLEX 5400	DELL	G20WMW3	EGG
DELL OPTIPLEX 5490	DELL	BBY29R3	EGG
DELL OPTIPLEX 7490	DELL	89ZPWP3	EGG
DELL OPTIPLEX 7490	DELL	B8ZPWP3	EGG
DELL POWEREDGE T110 II SERVER	DELL	HTSN9Z1	EGG
DELL VOSTRO 330 FT 04	DELL	FT0C5P1	EGG
DELL CHROMEBOOK 11 3100	DELL	91WNNJ3	ELM
DELL OPTIPLEX 3010 SFF	DELL	4QLD9Z1	ELM
DELL OPTIPLEX 5400	DELL	1N2HYS3	ELM
DELL OPTIPLEX 5400	DELL	3P2HYS3	ELM
DELL OPTIPLEX 5400	DELL	4P2HYS3	ELM
DELL OPTIPLEX 5400	DELL	HM2HYS3	ELM
DELL OPTIPLEX 5490	DELL	8QD4RJ3	ELM
DELL OPTIPLEX 5490	DELL	CQD4RJ3	ELM

DELL OPTIPLEX 5490	DELL	6SKLRN3	ELM
DELL OPTIPLEX 5490	DELL	7SKLRN3	ELM
DELL OPTIPLEX 5490	DELL	8JGLRN3	ELM
DELL OPTIPLEX 5490	DELL	8RKLRN3	ELM
DELL OPTIPLEX 5490	DELL	8SKLRN3	ELM
DELL OPTIPLEX 5490	DELL	FRKLRN3	ELM
DELL OPTIPLEX 5490	DELL	GRKLRN3	ELM
DELL OPTIPLEX 5490	DELL	JJGLRN3	ELM
DELL OPTIPLEX 7460	DELL	C4Y03W2	ELM
DELL OPTIPLEX 7490	DELL	3BZPWP3	ELM
DELL POWEREDGE T110 II SERVER	DELL	3T0LV12	ELM
DELL VOSTRO 1720 LAPTOP	DELL	2QGLLK1	ELM
DELL OPTIPLEX 5400	DELL	4R43DX3	GNZ
DELL CHROMEBOOK 11 3100	DELL	2P1PNJ3	GRI
DELL OPTIPLEX 5400	DELL	CYWVMW3	GRI
DELL OPTIPLEX 5400	DELL	CZWVMW3	GRI
DELL OPTIPLEX 5400	DELL	DXWVMW3	GRI
DELL OPTIPLEX 5400	DELL	F10WMW3	GRI
DELL OPTIPLEX 5400	DELL	GYWVMW3	GRI
DELL OPTIPLEX 5400	DELL	HZWVMW3	GRI
DELL OPTIPLEX 5400	DELL	J00WMW3	GRI
DELL OPTIPLEX 5400	DELL	6T5HYS3	GRI
DELL OPTIPLEX 5400	DELL	DS5HYS3	GRI
DELL OPTIPLEX 5400	DELL	FT5HYS3	GRI
DELL OPTIPLEX 5400	DELL	GT5HYS3	GRI
DELL OPTIPLEX 5400	DELL	320WMW3	GRI
DELL OPTIPLEX 5400	DELL	5YWVMW3	GRI
DELL OPTIPLEX 5400	DELL	620WMW3	GRI
DELL OPTIPLEX 5400	DELL	8YWVMW3	GRI
DELL OPTIPLEX 5400	DELL	9XWVMW3	GRI
DELL OPTIPLEX 5400	DELL	B20WMW3	GRI
DELL OPTIPLEX 5490	DELL	2SD4RJ3	GRI
DELL OPTIPLEX 7490	DELL	C9ZPWP3	GRI
DELL OPTIPLEX 7490	DELL	G8ZPWP3	GRI
DELL POWEREDGE T110 II SERVER	DELL	50YJCY1	GRI
POSIFLEX KS7517	POSIFLEX	KSD43491	GRI
POSIFLEX KS7517	POSIFLEX	KSD43488	GRI
DELL CHROMEBOOK 11 3100	DELL	GT9NNJ3	HAM
DELL OPTIPLEX 5400	DELL	2T5HYS3	HAM
DELL OPTIPLEX 5400	DELL	HR5HYS3	HAM
DELL OPTIPLEX 5400	DELL	HT5HYS3	HAM
DELL OPTIPLEX 5400	DELL	JS5HYS3	HAM
DELL OPTIPLEX 5490	DELL	68Y29R3	HAM
DELL OPTIPLEX 5490	DELL	6BY29R3	HAM
DELL OPTIPLEX 5490	DELL	8BY29R3	HAM
DELL OPTIPLEX 5490	DELL	99Y29R3	HAM
DELL OPTIPLEX 5490	DELL	B9Y29R3	HAM
DELL OPTIPLEX 5490	DELL	G1B29R3	HAM
DELL OPTIPLEX 5490	DELL	G7Y29R3	HAM
DELL OPTIPLEX 5490	DELL	J8Y29R3	HAM
DELL OPTIPLEX 5490	DELL	39Y29R3	HAM
DELL OPTIPLEX 5490	DELL	49Y29R3	HAM

DELL OPTIPLEX 5490	DELL	4BY29R3	HAM
DELL OPTIPLEX 5490	DELL	5BY29R3	HAM
DELL OPTIPLEX 5490	DELL	60B29R3	HAM
DELL OPTIPLEX 5490	DELL	62B29R3	HAM
DELL OPTIPLEX 7460	DELL	HY8QP42	HAM
DELL OPTIPLEX 7460	DELL	J8BQP42	HAM
DELL OPTIPLEX 7490	DELL	58ZPWP3	HAM
DELL OPTIPLEX 7490	DELL	DBZPWP3	HAM
DELL POWEREDGE T110 II SERVER	DELL	3SZKV12	HAM
DELL CHROMEBOOK 11 3100	DELL	DYVNNJ3	JBR
DELL LATITUDE 3510 BTX	DELL	FZMXR93	JBR
DELL LATITUDE 3510 BTX	DELL	FTQ7W93	JBR
DELL OPTIPLEX 5400	DELL	BYNM7V3	JBR
DELL OPTIPLEX 5400	DELL	CR5HYS3	JBR
DELL OPTIPLEX 5400	DELL	D1PM7V3	JBR
DELL OPTIPLEX 5400	DELL	12PM7V3	JBR
DELL OPTIPLEX 5400	DELL	D4SM7V3	JBR
DELL OPTIPLEX 5400	DELL	23PM7V3	JBR
DELL OPTIPLEX 5400	DELL	F2PM7V3	JBR
DELL OPTIPLEX 5400	DELL	2ZNM7V3	JBR
DELL OPTIPLEX 5400	DELL	FXNM7V3	JBR
DELL OPTIPLEX 5400	DELL	30PM7V3	JBR
DELL OPTIPLEX 5400	DELL	G1PM7V3	JBR
DELL OPTIPLEX 5400	DELL	42PM7V3	JBR
DELL OPTIPLEX 5400	DELL	H0PM7V3	JBR
DELL OPTIPLEX 5400	DELL	43PM7V3	JBR
DELL OPTIPLEX 5400	DELL	H1PM7V3	JBR
DELL OPTIPLEX 5400	DELL	4ZNM7V3	JBR
DELL OPTIPLEX 5400	DELL	H2PM7V3	JBR
DELL OPTIPLEX 5400	DELL	53PM7V3	JBR
DELL OPTIPLEX 5400	DELL	HYNM7V3	JBR
DELL OPTIPLEX 5400	DELL	5ZNM7V3	JBR
DELL OPTIPLEX 5400	DELL	J1PM7V3	JBR
DELL OPTIPLEX 5400	DELL	62PM7V3	JBR
DELL OPTIPLEX 5400	DELL	J2PM7V3	JBR
DELL OPTIPLEX 5400	DELL	70PM7V3	JBR
DELL OPTIPLEX 5400	DELL	JYNM7V3	JBR
DELL OPTIPLEX 5400	DELL	71PM7V3	JBR
DELL OPTIPLEX 5400	DELL	72PM7V3	JBR
DELL OPTIPLEX 5400	DELL	80PM7V3	JBR
DELL OPTIPLEX 5400	DELL	8YNM7V3	JBR
DELL OPTIPLEX 5400	DELL	8ZNM7V3	JBR
DELL OPTIPLEX 5400	DELL	5R5HYS3	JBR
DELL OPTIPLEX 5400	DELL	92PM7V3	JBR
DELL OPTIPLEX 5400	DELL	6S5HYS3	JBR
DELL OPTIPLEX 5400	DELL	9YNM7V3	JBR
DELL OPTIPLEX 5400	DELL	7S5HYS3	JBR
DELL OPTIPLEX 5400	DELL	B0PM7V3	JBR
DELL OPTIPLEX 5400	DELL	8R5HYS3	JBR
DELL OPTIPLEX 5400	DELL	B4SM7V3	JBR
DELL OPTIPLEX 5400	DELL	BR5HYS3	JBR
DELL OPTIPLEX 5490	DELL	D64LTH3	JBR

DELL OPTIPLEX 5490	DELL	5Z629R3	JBR
DELL OPTIPLEX 7490	DELL	1BZPWP3	JBR
DELL OPTIPLEX 7490	DELL	29ZPWP3	JBR
DELL OPTIPLEX 7490	DELL	8BZPWP3	JBR
DELL POWEREDGE T110 II SERVER	DELL	4X92TW1	JBR
DELL CHROMEBOOK 11 3100	DELL	57Y70H3	KNL
DELL CHROMEBOOK 11 3100	DELL	72B90H3	KNL
DELL CHROMEBOOK 11 3100	DELL	FDZ70H3	KNL
DELL OPTIPLEX 5400	DELL	2X43DX3	KNL
DELL OPTIPLEX 5400	DELL	3S43DX3	KNL
DELL OPTIPLEX 5400	DELL	8Q43DX3	KNL
DELL OPTIPLEX 5400	DELL	BV43DX3	KNL
DELL OPTIPLEX 5400	DELL	DQ5HYS3	KNL
DELL OPTIPLEX 5400	DELL	GS5HYS3	KNL
DELL OPTIPLEX 5400	DELL	BGSDRT3	KNL
DELL OPTIPLEX 5400	DELL	130WMW3	KNL
DELL OPTIPLEX 5400	DELL	810WMW3	KNL
DELL OPTIPLEX 5400	DELL	830WMW3	KNL
DELL OPTIPLEX 5400	DELL	D20WMW3	KNL
DELL OPTIPLEX 5400	DELL	820WMW3	KNL
DELL OPTIPLEX 7490	DELL	J9ZPWP3	KNL
DELL POWEREDGE T110 II SERVER	DELL	HNBX9Y1	KNL
POSIFLEX KS7317	POSIFLEX	KSB80009	KNL
POSIFLEX KS7317	POSIFLEX	KSC30649	KNL
DELL CHROMEBOOK 11 3100	DELL	8ZM2NJ3	KNM
DELL LATITUDE 3540 XCTO	DELL	974SYW3	KNM
DELL OPTIPLEX 3010 SFF	DELL	BP9RSW1	KNM
DELL OPTIPLEX 3010 SFF	DELL	BPBPSW1	KNM
DELL OPTIPLEX 5400	DELL	D10WMW3	KNM
DELL OPTIPLEX 5400	DELL	330WMW3	KNM
DELL OPTIPLEX 5400	DELL	FYWVMW3	KNM
DELL OPTIPLEX 5400	DELL	3F3WMW3	KNM
DELL OPTIPLEX 5400	DELL	FZWVMW3	KNM
DELL OPTIPLEX 5400	DELL	430WMW3	KNM
DELL OPTIPLEX 5400	DELL	HXWVMW3	KNM
DELL OPTIPLEX 5400	DELL	4ZWVMW3	KNM
DELL OPTIPLEX 5400	DELL	510WMW3	KNM
DELL OPTIPLEX 5400	DELL	520WMW3	KNM
DELL OPTIPLEX 5400	DELL	610WMW3	KNM
DELL OPTIPLEX 5400	DELL	630WMW3	KNM
DELL OPTIPLEX 5400	DELL	6YWVMW3	KNM
DELL OPTIPLEX 5400	DELL	720WMW3	KNM
DELL OPTIPLEX 5400	DELL	1FPDRT3	KNM
DELL OPTIPLEX 5400	DELL	7ZWVMW3	KNM
DELL OPTIPLEX 5400	DELL	5HSDRT3	KNM
DELL OPTIPLEX 5400	DELL	8XWVMW3	KNM
DELL OPTIPLEX 5400	DELL	7HSDRT3	KNM
DELL OPTIPLEX 5400	DELL	8ZWVMW3	KNM
DELL OPTIPLEX 5400	DELL	8HSDRT3	KNM
DELL OPTIPLEX 5400	DELL	910WMW3	KNM
DELL OPTIPLEX 5400	DELL	CHSDRT3	KNM
DELL OPTIPLEX 5400	DELL	920WMW3	KNM

DELL OPTIPLEX 5400	DELL	DGSDRT3	KNM
DELL OPTIPLEX 5400	DELL	930WMW3	KNM
DELL OPTIPLEX 5400	DELL	FBPDRT3	KNM
DELL OPTIPLEX 5400	DELL	9YWVMW3	KNM
DELL OPTIPLEX 5400	DELL	94SM7V3	KNM
DELL OPTIPLEX 5400	DELL	9ZWVMW3	KNM
DELL OPTIPLEX 5400	DELL	110WMW3	KNM
DELL OPTIPLEX 5400	DELL	B10WMW3	KNM
DELL OPTIPLEX 5400	DELL	220WMW3	KNM
DELL OPTIPLEX 5400	DELL	C10WMW3	KNM
DELL OPTIPLEX 5400	DELL	2F3WMW3	KNM
DELL OPTIPLEX 5400	DELL	CXWVMW3	KNM
DELL OPTIPLEX 5400	DELL	2ZWVMW3	KNM
DELL OPTIPLEX 7490	DELL	B9ZPWP3	KNM
DELL OPTIPLEX 7490	DELL	F8ZPWP3	KNM
DELL POWEREDGE T110 II SERVER	DELL	HNBY9Y1	KNM
DELL CHROMEBOOK 11 3100	DELL	6F780H3	LCW
DELL CHROMEBOOK 11 3100	DELL	CM770H3	LCW
DELL CHROMEBOOK 11 3100	DELL	HX790H3	LCW
DELL LATITUDE 3520 XCTO	DELL	5F919S3	LCW
DELL OPTIPLEX 3040 SFF	DELL	7LRB8C2	LCW
DELL OPTIPLEX 3040 SFF	DELL	7LVG8C2	LCW
DELL OPTIPLEX 3040 SFF	DELL	7LWJ8C2	LCW
DELL OPTIPLEX 3040 SFF	DELL	7LYC8C2	LCW
DELL OPTIPLEX 5400	DELL	JR5HYS3	LCW
DELL OPTIPLEX 5400	DELL	JT5HYS3	LCW
DELL OPTIPLEX 5400	DELL	79PDRT3	LCW
DELL OPTIPLEX 5400	DELL	7DPDRT3	LCW
DELL OPTIPLEX 5400	DELL	1T5HYS3	LCW
DELL OPTIPLEX 5400	DELL	2S5HYS3	LCW
DELL OPTIPLEX 5400	DELL	3S5HYS3	LCW
DELL OPTIPLEX 5400	DELL	4R5HYS3	LCW
DELL OPTIPLEX 5400	DELL	5T5HYS3	LCW
DELL OPTIPLEX 5400	DELL	HS5HYS3	LCW
DELL OPTIPLEX 5490	DELL	9SKLRN3	LCW
DELL OPTIPLEX 5490	DELL	78Y29R3	LCW
DELL OPTIPLEX 5490	DELL	D9Y29R3	LCW
DELL OPTIPLEX 7490	DELL	CPKS2L3	LCW
DELL OPTIPLEX 7490	DELL	HQNS2L3	LCW
DELL POWEREDGE T110 II SERVER	DELL	62PWFZ1	LCW
DELL VOSTRO 330 FT 04	DELL	CT0C5P1	LCW
DELL CHROMEBOOK 11 3100	DELL	4SHNNJ3	LNC
DELL LATITUDE 3510 BTX	DELL	4Q8KG63	LNC
DELL LATITUDE 3510 BTX	DELL	D89KG63	LNC
DELL OPTIPLEX 5400	DELL	8GSDRT3	LNC
DELL OPTIPLEX 5400	DELL	9GSDRT3	LNC
DELL OPTIPLEX 5400	DELL	CDPDRT3	LNC
DELL OPTIPLEX 5400	DELL	DDPDRT3	LNC
DELL OPTIPLEX 5400	DELL	FDPDRT3	LNC
DELL OPTIPLEX 5400	DELL	FGSDRT3	LNC
DELL OPTIPLEX 5400	DELL	GCPDRT3	LNC
DELL OPTIPLEX 5400	DELL	GDPDRT3	LNC

DELL OPTIPLEX 5400	DELL	GFSDRT3	LNC
DELL OPTIPLEX 5400	DELL	GGSDRT3	LNC
DELL OPTIPLEX 5400	DELL	HDPDRT3	LNC
DELL OPTIPLEX 5400	DELL	HFSDRT3	LNC
DELL OPTIPLEX 5400	DELL	HGSDRT3	LNC
DELL OPTIPLEX 5400	DELL	1JSDRT3	LNC
DELL OPTIPLEX 5400	DELL	3JSDRT3	LNC
DELL OPTIPLEX 5400	DELL	4GSDRT3	LNC
DELL OPTIPLEX 5400	DELL	5GSDRT3	LNC
DELL OPTIPLEX 5400	DELL	5JSDRT3	LNC
DELL OPTIPLEX 5400	DELL	7GSDRT3	LNC
DELL OPTIPLEX 5490	DELL	2RKLRN3	LNC
DELL OPTIPLEX 5490	DELL	6JGLRN3	LNC
DELL OPTIPLEX 5490	DELL	2BY29R3	LNC
DELL OPTIPLEX 5490	DELL	88Y29R3	LNC
DELL OPTIPLEX 5490	DELL	89Y29R3	LNC
DELL OPTIPLEX 7490	DELL	39ZPWP3	LNC
DELL OPTIPLEX 7490	DELL	99ZPWP3	LNC
DELL POWEREDGE T110 II SERVER	DELL	62QTFZ1	LNC
PC LAPTOP GATEWAY SOLO 9550b LS	GATEWAY	0025979471	LNC
PC LAPTOP HP DV4000	HP	2CE528URTD	LNC
DELL CHROMEBOOK 11 3100	DELL	J4WNNJ3	LSH
DELL OPTIPLEX 5490	DELL	4Z629R3	LSH
DELL OPTIPLEX 5490	DELL	50B29R3	LSH
DELL OPTIPLEX 5490	DELL	B1B29R3	LSH
DELL OPTIPLEX 5490	DELL	GP329R3	LSH
DELL OPTIPLEX 5490	DELL	H7Y29R3	LSH
DELL OPTIPLEX 5490	DELL	HP329R3	LSH
DELL OPTIPLEX 5490	DELL	HY629R3	LSH
DELL OPTIPLEX 5490	DELL	J0B29R3	LSH
DELL OPTIPLEX 7460	DELL	BN4NP42	LSH
DELL OPTIPLEX 7490	DELL	2RNS2L3	LSH
DELL POWEREDGE T110 II SERVER	DELL	62QSFZ1	LSH
DELL CHROMEBOOK 11 3100	DELL	3CDVMJ3	MAR
DELL OPTIPLEX 3010 SFF	DELL	7MW2BY1	MAR
DELL OPTIPLEX 3010 SFF	DELL	7MW1BY1	MAR
DELL OPTIPLEX 5490	DELL	69Y29R3	MAR
DELL OPTIPLEX 5490	DELL	98Y29R3	MAR
DELL OPTIPLEX 5490	DELL	B8Y29R3	MAR
DELL OPTIPLEX 5490	DELL	C8Y29R3	MAR
DELL OPTIPLEX 5490	DELL	C9Y29R3	MAR
DELL OPTIPLEX 5490	DELL	DBY29R3	MAR
DELL OPTIPLEX 7490	DELL	4BZPWP3	MAR
DELL OPTIPLEX 7490	DELL	6BZPWP3	MAR
DELL CHROMEBOOK 11 3100	DELL	66X70H3	MRW
DELL CHROMEBOOK 11 3100	DELL	6XT20H3	MRW
DELL CHROMEBOOK 11 3100	DELL	8PL80H3	MRW
DELL OPTIPLEX 3010 SFF	DELL	HM4H8Z1	MRW
DELL OPTIPLEX 390 SFF	DELL	5SWQYV1	MRW
DELL OPTIPLEX 390 SFF	DELL	5SWTYV1	MRW
DELL OPTIPLEX 390 SFF	DELL	5SSSYV1	MRW
DELL OPTIPLEX 390 SFF	DELL	5SSTYV1	MRW

DELL OPTIPLEX 390 SFF	DELL	5STSYV1	MRW
DELL OPTIPLEX 390 SFF	DELL	5STTYV1	MRW
DELL OPTIPLEX 390 SFF	DELL	5SVQYV1	MRW
DELL OPTIPLEX 5400	DELL	31PM7V3	MRW
DELL OPTIPLEX 5400	DELL	32PM7V3	MRW
DELL OPTIPLEX 5400	DELL	3ZNM7V3	MRW
DELL OPTIPLEX 5400	DELL	41PM7V3	MRW
DELL OPTIPLEX 5400	DELL	F0PM7V3	MRW
DELL OPTIPLEX 5400	DELL	JD3WMW3	MRW
DELL OPTIPLEX 5400	DELL	5R43DX3	MRW
DELL OPTIPLEX 5400	DELL	7S43DX3	MRW
DELL OPTIPLEX 5400	DELL	9T43DX3	MRW
DELL OPTIPLEX 5400	DELL	CQ43DX3	MRW
DELL OPTIPLEX 5400	DELL	JS43DX3	MRW
DELL OPTIPLEX 5400	DELL	JV43DX3	MRW
DELL OPTIPLEX 5400	DELL	BBPDRT3	MRW
DELL OPTIPLEX 5400	DELL	DHSDRT3	MRW
DELL OPTIPLEX 5400	DELL	JCPDRT3	MRW
DELL OPTIPLEX 5400	DELL	JFSDRT3	MRW
DELL OPTIPLEX 5490	DELL	174LTH3	MRW
DELL OPTIPLEX 5490	DELL	J54LTH3	MRW
DELL OPTIPLEX 5490	DELL	28413Q3	MRW
DELL OPTIPLEX 5490	DELL	J6413Q3	MRW
DELL OPTIPLEX 5490	DELL	71B29R3	MRW
DELL OPTIPLEX 5490	DELL	H1B29R3	MRW
DELL OPTIPLEX 7040 MT	DELL	55KLCH2	MRW
DELL OPTIPLEX 7460	DELL	B3R99T2	MRW
DELL OPTIPLEX 7490	DELL	J8ZPWP3	MRW
DELL POWEREDGE T110 II SERVER	DELL	3SZJV12	MRW
DELL VOSTRO 330 FT 04	DELL	413D5P1	MRW
DELL VOSTRO 330 FT 04	DELL	9T0C5P1	MRW
DELL VOSTRO 330 FT 04	DELL	HT0C5P1	MRW
DELL VOSTRO 330 FT 04	DELL	B03D5P1	MRW
HP SMART BUY PROBOOK 4520s	HP	2CE0130Y13	MRW
PC iMAC 20	APPLE	QP83907AZE5	MRW
DELL CHROMEBOOK 11 3100	DELL	56N90H3	NCO
DELL CHROMEBOOK 11 3100	DELL	5D820H3	NCO
DELL CHROMEBOOK 11 3100	DELL	DNR70H3	NCO
DELL OPTIPLEX 5490	DELL	16413Q3	NCO
DELL OPTIPLEX 5490	DELL	57413Q3	NCO
DELL OPTIPLEX 5490	DELL	66413Q3	NCO
DELL OPTIPLEX 5490	DELL	67413Q3	NCO
DELL OPTIPLEX 5490	DELL	6D713Q3	NCO
DELL OPTIPLEX 5490	DELL	76413Q3	NCO
DELL OPTIPLEX 5490	DELL	BB413Q3	NCO
DELL OPTIPLEX 5490	DELL	C6413Q3	NCO
DELL OPTIPLEX 5490	DELL	C9413Q3	NCO
DELL OPTIPLEX 5490	DELL	DB413Q3	NCO
DELL OPTIPLEX 5490	DELL	29Y29R3	NCO
DELL OPTIPLEX 5490	DELL	G9Y29R3	NCO
DELL OPTIPLEX 7490	DELL	4RNS2L3	NCO
DELL POWEREDGE T110 II SERVER	DELL	50WLCY1	NCO

DELL VOSTRO 360	DELL	6Y8R9Q1	NCO
DELL CHROMEBOOK 11 3100	DELL	8P770H3	NIA
DELL CHROMEBOOK 11 3100	DELL	BQR70H3	NIA
DELL CHROMEBOOK 11 3100	DELL	FT170H3	NIA
DELL OPTIPLEX 3010 SFF	DELL	CVHX8Y1	NIA
DELL OPTIPLEX 3010 SFF	DELL	CVJZ8Y1	NIA
DELL OPTIPLEX 3010 SFF	DELL	CVQY8Y1	NIA
DELL OPTIPLEX 3010 SFF	DELL	CVRY8Y1	NIA
DELL OPTIPLEX 3010 SFF	DELL	CVVY8Y1	NIA
DELL OPTIPLEX 5260	DELL	H55DPX2	NIA
DELL OPTIPLEX 5260	DELL	H55HPX2	NIA
DELL OPTIPLEX 5400	DELL	6P13DX3	NIA
DELL OPTIPLEX 5400	DELL	6S43DX3	NIA
DELL OPTIPLEX 5400	DELL	7V43DX3	NIA
DELL OPTIPLEX 5400	DELL	CR43DX3	NIA
DELL OPTIPLEX 5400	DELL	CT43DX3	NIA
DELL OPTIPLEX 5400	DELL	FR43DX3	NIA
DELL OPTIPLEX 5400	DELL	FW43DX3	NIA
DELL OPTIPLEX 5400	DELL	4P13DX3	NIA
DELL OPTIPLEX 5400	DELL	5S43DX3	NIA
DELL OPTIPLEX 7460	DELL	CZJYDX2	NIA
DELL OPTIPLEX 7490	DELL	GBZPWP3	NIA
DELL POWEREDGE T110 II SERVER	DELL	50XJCY1	NIA
DELL VOSTRO 360	DELL	6NPS9Q1	NIA
DELL CHROMEBOOK 11 3100	DELL	1JPNNJ3	NPK
DELL CHROMEBOOK 11 3100	DELL	9ZVNNJ3	NPK
DELL OPTIPLEX 5400	DELL	1S5HYS3	NPK
DELL OPTIPLEX 5400	DELL	1DPDRT3	NPK
DELL OPTIPLEX 5400	DELL	2BPDRT3	NPK
DELL OPTIPLEX 5400	DELL	2DPDRT3	NPK
DELL OPTIPLEX 5400	DELL	4BPDRT3	NPK
DELL OPTIPLEX 5400	DELL	4CPDRT3	NPK
DELL OPTIPLEX 5400	DELL	4HSDRT3	NPK
DELL OPTIPLEX 5400	DELL	5DPDRT3	NPK
DELL OPTIPLEX 5400	DELL	6HSDRT3	NPK
DELL OPTIPLEX 5400	DELL	89PDRT3	NPK
DELL OPTIPLEX 5400	DELL	8DPDRT3	NPK
DELL OPTIPLEX 5400	DELL	99PDRT3	NPK
DELL OPTIPLEX 5400	DELL	9CPDRT3	NPK
DELL OPTIPLEX 5400	DELL	B9PDRT3	NPK
DELL OPTIPLEX 5400	DELL	BCPDRT3	NPK
DELL OPTIPLEX 5400	DELL	FCPDRT3	NPK
DELL OPTIPLEX 5400	DELL	G9PDRT3	NPK
DELL OPTIPLEX 5400	DELL	GBPDRT3	NPK
DELL OPTIPLEX 5400	DELL	H9PDRT3	NPK
DELL OPTIPLEX 5490	DELL	28Y29R3	NPK
DELL OPTIPLEX 5490	DELL	42B29R3	NPK
DELL OPTIPLEX 7490	DELL	5BZPWP3	NPK
DELL OPTIPLEX 7490	DELL	GC2QWP3	NPK
DELL POWEREDGE T110 II SERVER	DELL	50XKCY1	NPK
DELL VOSTRO 360	DELL	B1BR9Q1	NPK
DELL VOSTRO 360	DELL	32BR9Q1	NPK

DELL CHROMEBOOK 11 3100 KIT #4	DELL	3261GD3	NST
DELL CHROMEBOOK 11 3100 KIT #5	DELL	4161GD3	NST
DELL CHROMEBOOK 11 3100 KIT #6	DELL	B1P2GD3	NST
DELL LATITUDE 3520 CTO	DELL	CGC1SL3	NST
DELL LATITUDE 3520 CTO	DELL	DGC1SL3	NST
DELL OPTIPLEX 5400	DELL	FR5HYS3	NST
DELL OPTIPLEX 5400	DELL	GR5HYS3	NST
DELL OPTIPLEX 5490	DELL	D6413Q3	NST
DELL OPTIPLEX 5490	DELL	9B413Q3	NST
DELL OPTIPLEX 5490	DELL	B7413Q3	NST
DELL OPTIPLEX 5490	DELL	H54LTH3	NST
DELL OPTIPLEX 5490	DELL	37413Q3	NST
DELL OPTIPLEX 5490	DELL	F6413Q3	NST
DELL OPTIPLEX 5490	DELL	59413Q3	NST
DELL OPTIPLEX 5490	DELL	96413Q3	NST
DELL OPTIPLEX 5490	DELL	29413Q3	NST
DELL OPTIPLEX 5490	DELL	H6413Q3	NST
DELL OPTIPLEX 5490	DELL	5D713Q3	NST
DELL OPTIPLEX 5490	DELL	9D713Q3	NST
DELL OPTIPLEX 5490	DELL	2D713Q3	NST
DELL OPTIPLEX 7490	DELL	98ZPWP3	NST
DELL OPTIPLEX 7490	DELL	H9ZPWP3	NST
DELL POWEREDGE T110 II SERVER	DELL	1LNL9Z1	NST
DELL CHROMEBOOK 11 3100	DELL	CZHMNJ3	OPK
DELL OPTIPLEX 5260	DELL	8MNK7X2	OPK
DELL OPTIPLEX 5400	DELL	HN2HYS3	OPK
DELL OPTIPLEX 5400	DELL	2N2HYS3	OPK
DELL OPTIPLEX 5400	DELL	HQ5HYS3	OPK
DELL OPTIPLEX 5400	DELL	2P2HYS3	OPK
DELL OPTIPLEX 5400	DELL	JM2HYS3	OPK
DELL OPTIPLEX 5400	DELL	5P2HYS3	OPK
DELL OPTIPLEX 5400	DELL	6M2HYS3	OPK
DELL OPTIPLEX 5400	DELL	6N2HYS3	OPK
DELL OPTIPLEX 5400	DELL	6P2HYS3	OPK
DELL OPTIPLEX 5400	DELL	8N2HYS3	OPK
DELL OPTIPLEX 5400	DELL	9M2HYS3	OPK
DELL OPTIPLEX 5400	DELL	9N2HYS3	OPK
DELL OPTIPLEX 5400	DELL	9Q5HYS3	OPK
DELL OPTIPLEX 5400	DELL	BM2HYS3	OPK
DELL OPTIPLEX 5400	DELL	BN2HYS3	OPK
DELL OPTIPLEX 5400	DELL	BQ5HYS3	OPK
DELL OPTIPLEX 5400	DELL	CM2HYS3	OPK
DELL OPTIPLEX 5400	DELL	CN2HYS3	OPK
DELL OPTIPLEX 5400	DELL	CQ5HYS3	OPK
DELL OPTIPLEX 5400	DELL	DM2HYS3	OPK
DELL OPTIPLEX 5400	DELL	DR5HYS3	OPK
DELL OPTIPLEX 5400	DELL	FQ5HYS3	OPK
DELL OPTIPLEX 5400	DELL	GM2HYS3	OPK
DELL OPTIPLEX 5400	DELL	GQ5HYS3	OPK
DELL OPTIPLEX 5400	DELL	1P2HYS3	OPK
DELL OPTIPLEX 5490	DELL	H0B29R3	OPK
DELL OPTIPLEX 7460	DELL	CYM0FX2	OPK

DELL OPTIPLEX 7460	DELL	CZH2FX2	OPK
DELL OPTIPLEX 7490	DELL	HC2QWP3	OPK
DELL OPTIPLEX 7490	DELL	JBZPWP3	OPK
DELL POWEREDGE T110 II SERVER	DELL	62PTFZ1	OPK
HP CHROMEBOOK 14"	HP	5CD83773KK	OPK
HP CHROMEBOOK 14"	HP	5CD8272XWT	OPK
LENOVO THINKPAD EDGE LAPTOP	LENOVO	R9KABY8	OPK
LENOVO THINKPAD EDGE LAPTOP	LENOVO	R9KAC1X	OPK
PC LAPTOP HP SMART BUY PROBOOK 4520s	HP	2CE0201FXQ	OPK
POSIFLEX KS7317	POSIFLEX	KSA62096	OPK
POSIFLEX KS7317	POSIFLEX	KSA61983	OPK
POSIFLEX KS7317	POSIFLEX	KSA62143	OPK
DELL CHROMEBOOK 11 3100	DELL	7HD90H3	PAN
DELL CHROMEBOOK 11 3100	DELL	1H270H3	PAN
DELL CHROMEBOOK 11 3100	DELL	6NR70H3	PAN
DELL OPTIPLEX 5400	DELL	2HSDRT3	PAN
DELL OPTIPLEX 5490	DELL	264LTH3	PAN
DELL OPTIPLEX 5490	DELL	1QD4RJ3	PAN
DELL OPTIPLEX 5490	DELL	1SD4RJ3	PAN
DELL OPTIPLEX 5490	DELL	2RD4RJ3	PAN
DELL OPTIPLEX 5490	DELL	3QD4RJ3	PAN
DELL OPTIPLEX 5490	DELL	3RD4RJ3	PAN
DELL OPTIPLEX 5490	DELL	4QD4RJ3	PAN
DELL OPTIPLEX 5490	DELL	5RD4RJ3	PAN
DELL OPTIPLEX 5490	DELL	8RD4RJ3	PAN
DELL OPTIPLEX 5490	DELL	9RD4RJ3	PAN
DELL OPTIPLEX 5490	DELL	BQD4RJ3	PAN
DELL OPTIPLEX 5490	DELL	CRD4RJ3	PAN
DELL OPTIPLEX 5490	DELL	DPD4RJ3	PAN
DELL OPTIPLEX 5490	DELL	DQD4RJ3	PAN
DELL OPTIPLEX 5490	DELL	DRD4RJ3	PAN
DELL OPTIPLEX 5490	DELL	FQD4RJ3	PAN
DELL OPTIPLEX 5490	DELL	HRD4RJ3	PAN
DELL OPTIPLEX 5490	DELL	JQD4RJ3	PAN
DELL OPTIPLEX 7460	DELL	2CF7PX2	PAN
DELL OPTIPLEX 7490	DELL	7RNS2L3	PAN
DELL POWEREDGE T110 II SERVER	DELL	50XLCY1	PAN
DELL CHROMEBOOK 11 3100	DELL	58Y70H3	REI
DELL CHROMEBOOK 11 3100	DELL	75X70H3	REI
DELL CHROMEBOOK 11 3100	DELL	GM030H3	REI
DELL LATITUDE 3510 BTX	DELL	61NXR93	REI
DELL OPTIPLEX 5400	DELL	HXNM7V3	REI
DELL OPTIPLEX 5400	DELL	JZNM7V3	REI
DELL OPTIPLEX 5400	DELL	13PM7V3	REI
DELL OPTIPLEX 5400	DELL	21PM7V3	REI
DELL OPTIPLEX 5400	DELL	40PM7V3	REI
DELL OPTIPLEX 5400	DELL	51PM7V3	REI
DELL OPTIPLEX 5400	DELL	61PM7V3	REI
DELL OPTIPLEX 5400	DELL	64SM7V3	REI
DELL OPTIPLEX 5400	DELL	73PM7V3	REI
DELL OPTIPLEX 5400	DELL	7YNM7V3	REI
DELL OPTIPLEX 5400	DELL	81PM7V3	REI

DELL OPTIPLEX 5400	DELL	83PM7V3	REI
DELL OPTIPLEX 5400	DELL	84SM7V3	REI
DELL OPTIPLEX 5400	DELL	B1PM7V3	REI
DELL OPTIPLEX 5400	DELL	B2PM7V3	REI
DELL OPTIPLEX 5400	DELL	BZNM7V3	REI
DELL OPTIPLEX 5400	DELL	C2PM7V3	REI
DELL OPTIPLEX 5400	DELL	C4SM7V3	REI
DELL OPTIPLEX 5400	DELL	DZNM7V3	REI
DELL OPTIPLEX 5400	DELL	G2PM7V3	REI
DELL OPTIPLEX 5400	DELL	GYNM7V3	REI
DELL OPTIPLEX 5400	DELL	GZNM7V3	REI
DELL OPTIPLEX 5490	DELL	G8Y29R3	REI
DELL OPTIPLEX 5490	DELL	G64LTH3	REI
DELL OPTIPLEX 5490	DELL	D1B29R3	REI
DELL OPTIPLEX 5490	DELL	FBY29R3	REI
DELL OPTIPLEX 7460	DELL	B3SD9T2	REI
DELL OPTIPLEX 7490	DELL	19ZPWP3	REI
DELL OPTIPLEX 7490	DELL	G9ZPWP3	REI
DELL POWEREDGE T110 II SERVER	DELL	4XB0TW1	REI
DELL VOSTRO 330 FT 04	DELL	D03D5P1	REI
DELL CHROMEBOOK 11 3100	DELL	9G780H3	TON
DELL CHROMEBOOK 11 3100	DELL	BL030H3	TON
DELL CHROMEBOOK 11 3100	DELL	DDD90H3	TON
DELL OPTIPLEX 5400	DELL	BYWVMW3	TON
DELL OPTIPLEX 5400	DELL	D30WMW3	TON
DELL OPTIPLEX 5400	DELL	F00WMW3	TON
DELL OPTIPLEX 5400	DELL	F30WMW3	TON
DELL OPTIPLEX 5400	DELL	H00WMW3	TON
DELL OPTIPLEX 5400	DELL	H10WMW3	TON
DELL OPTIPLEX 5400	DELL	J10WMW3	TON
DELL OPTIPLEX 5400	DELL	JXWVMW3	TON
DELL OPTIPLEX 5400	DELL	JZWVMW3	TON
DELL OPTIPLEX 5400	DELL	3BPDRT3	TON
DELL OPTIPLEX 5400	DELL	4DPDRT3	TON
DELL OPTIPLEX 5400	DELL	C9PDRT3	TON
DELL OPTIPLEX 5400	DELL	F9PDRT3	TON
DELL OPTIPLEX 5400	DELL	JHSDRT3	TON
DELL OPTIPLEX 5400	DELL	1YWVMW3	TON
DELL OPTIPLEX 5400	DELL	1ZWVMW3	TON
DELL OPTIPLEX 5400	DELL	210WMW3	TON
DELL OPTIPLEX 5400	DELL	2YWVMW3	TON
DELL OPTIPLEX 5400	DELL	310WMW3	TON
DELL OPTIPLEX 5400	DELL	5ZWVMW3	TON
DELL OPTIPLEX 5400	DELL	6ZWVMW3	TON
DELL OPTIPLEX 5400	DELL	B30WMW3	TON
DELL OPTIPLEX 7490	DELL	F9ZPWP3	TON
DELL OPTIPLEX 7490	DELL	HBZPWP3	TON
DELL POWEREDGE T110 II SERVER	DELL	4XB1TW1	TON
DELL PRECISION T1700 SFF	DELL	F80MD42	TON
DELL CHROMEBOOK 11 3100	DELL	8R1PNJ3	WIL
DELL OPTIPLEX 3040 SFF	DELL	7LNF8C2	WIL
DELL OPTIPLEX 3040 SFF	DELL	7LMD8C2	WIL

Sheet1

DELL OPTIPLEX 5260	DELL	FGY6L42	WIL
DELL OPTIPLEX 7490	DELL	CRNS2L3	WIL
DELL OPTIPLEX 7490	DELL	FQNS2L3	WIL
DELL OPTIPLEX 7490	DELL	D5ZPWP3	WIL
DELL POWEREDGE T110 II SERVER	DELL	HTSV8Z1	WIL
DELL VOSTRO 330 FT 04	DELL	613D5P1	WIL
DELL CHROMEBOOK 11 3100	DELL	HKHNNJ3	WSE
DELL OPTIPLEX 5400	DELL	2JSDRT3	WSE
DELL OPTIPLEX 5400	DELL	3GSDRT3	WSE
DELL OPTIPLEX 5400	DELL	4JSDRT3	WSE
DELL OPTIPLEX 5400	DELL	6DPDRT3	WSE
DELL OPTIPLEX 5400	DELL	7CPDRT3	WSE
DELL OPTIPLEX 5400	DELL	BDPDRT3	WSE
DELL OPTIPLEX 5400	DELL	DCPDRT3	WSE
DELL OPTIPLEX 5400	DELL	GHSDRT3	WSE
DELL OPTIPLEX 5400	DELL	H9PDRT3	WSE
DELL OPTIPLEX 5400	DELL	HCPDRT3	WSE
DELL OPTIPLEX 5400	DELL	HHSDRT3	WSE
DELL OPTIPLEX 5400	DELL	J9PDRT3	WSE
DELL OPTIPLEX 5400	DELL	JBPDRT3	WSE
DELL OPTIPLEX 5400	DELL	JDPDRT3	WSE
DELL OPTIPLEX 5400	DELL	3R5HYS3	WSE
DELL OPTIPLEX 5400	DELL	5S5HYS3	WSE
DELL OPTIPLEX 5400	DELL	6R5HYS3	WSE
DELL OPTIPLEX 5400	DELL	7R5HYS3	WSE
DELL OPTIPLEX 5400	DELL	8S5HYS3	WSE
DELL OPTIPLEX 5400	DELL	FN2HYS3	WSE
DELL OPTIPLEX 5400	DELL	JQ5HYS3	WSE
DELL OPTIPLEX 5490	DELL	91B29R3	WSE
DELL OPTIPLEX 5490	DELL	FP329R3	WSE
DELL OPTIPLEX 7460	DELL	CW1QN42	WSE
DELL OPTIPLEX 7490	DELL	8RNS2L3	WSE
DELL POWEREDGE T110 II SERVER	DELL	HTSL9Z1	WSE
DELL VOSTRO 330	DELL	J03D5P1	WSE
DELL VOSTRO 330 FT 04	DELL	3V0C5P1	WSE
DELL VOSTRO 360	DELL	5VWS9Q1	WSE
DELL VOSTRO 360	DELL	9VWS9Q1	WSE
HP 470 G7 NOTEBOOK	HP	5CG0289QWZ	WSE

Appendix B Network Equipment in the Data Center and branch/ contract libraries

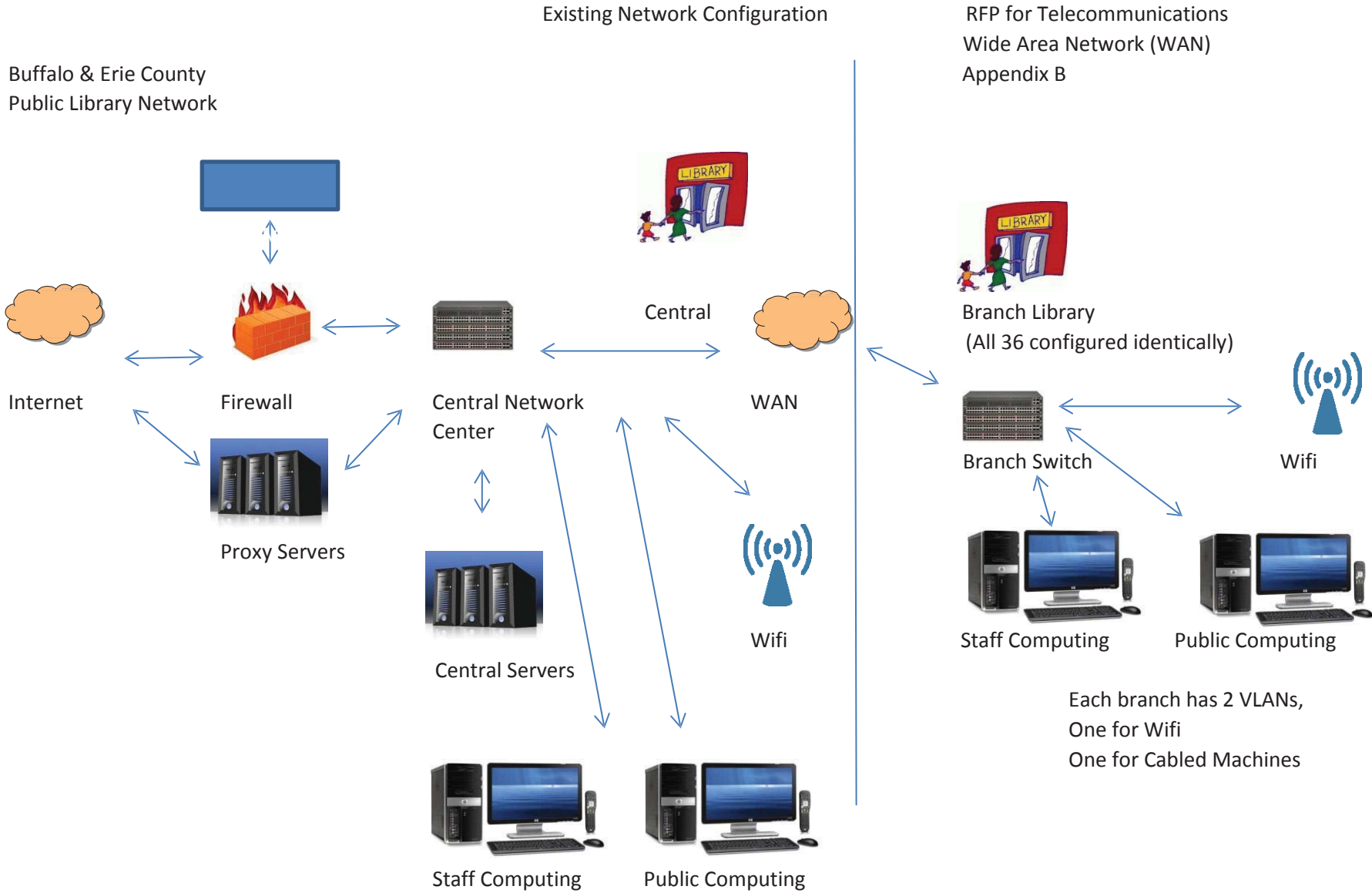
Network Equipment

10 HP ProCurve 2626 switch
50 HP ProCurve 2510 switch
1 Cisco 9410 switch
4 Cisco 9407 switch
45 Cisco 1231 WAP
90 Cisco 1602 WAP
10 1852 WAPs

Servers

2 Dell Power Edge R720
6 Dell Power Edge R515
2 Dell Power Edge R520
1 Dell Power Edge R540
1 Dell Power Edge R730
3 Dell Power Edge R740
1 Dell Power Edge R750
1 Dell Power Edge R440
2 Dell Power Edge R230
1 Dell Power Edge R630
1 Dell Power Edge 2970

37 Dell Power Edge T110 II (located at branches)





REQUEST FOR PROPOSAL
FOR
NETWORK, SERVER AND WORKSTATION
SUPPORT & MAINTENANCE/REPAIR
REPLACEMENT PARTS
PROJECT MANAGEMENT AND CONSULTING SERVICES
Library Locations

Akron

Newstead Public Library (AKR)
33 Main St.
Akron, NY 14001
716-542-2327

Alden

Ewell Free Library (ALD)
13280 Broadway
Alden, NY 14004
716-937-7082

Town of Amherst

Main Library at Audubon (AUD)
350 John J. Audubon Pkwy.
Amherst, NY 14228
716-689-4922

Clearfield Branch (CFD)

770 Hopkins Rd.
Williamsville, NY 14221
716-688-4955

Eggertsville-Snyder Branch (EGG)

4622 Main St.
Snyder, NY 14226
716-839-0700

Williamsville Branch (WIL)

5571 Main St.
Williamsville, NY 14221
716-632-6176

Angola

Angola Public Library (ANG)

34 N. Main St.

Angola, NY 14006

716-549-1271

Town of Aurora

East Aurora Library (EAU)

550 Main St.

East Aurora, NY 14052

716-652-4440

Boston

Boston Free Library (BOS)

9475 Boston State Rd.

P.O. Box 200 (mailing)

Boston, NY 14025

716-941-3516

City of Buffalo

Central Library (CNT)

1 Lafayette Square

Buffalo, NY 14203

716-858-8900

Crane Branch (CRA)

633 Elmwood Ave.

Buffalo, NY 14222

716-883-6651

Dudley Branch (DUD)

2010 South Park Ave.

Buffalo, NY 14220

716-823-1854

East Clinton Branch (ECL)

1929 Clinton St.

Buffalo, NY 14206

716-823-5626

East Delavan Branch (EDL)

1187 East Delavan Ave.

Buffalo, NY 14215

716-896-4433

Frank E. Merriweather, Jr. Library (MRW)
1324 Jefferson Ave.
Buffalo, NY 14208
716-883-4418

Niagara Branch (NIA)
280 Porter Ave.
Buffalo, NY 14201
716-882-1537

North Park Branch (NPK)
975 Hertel Ave.
Buffalo, NY 14216
716-875-3748

Riverside Branch (RIV)
820 Tonawanda St.
Buffalo, NY 14207
716-875-0562

Cheektowaga Public Library

Julia Boyer Reinstein Library (JBR)
1030 Losson Rd.
Cheektowaga, NY 14227
716-668-4991

Anna M. Reinstein Memorial Library (REI)
2580 Harlem Rd.
Cheektowaga, NY 14225
716-892-8089

Clarence

Clarence Public Library (CLA)
Three Town Place
Clarence, NY 14031
716-741-2650

Collins

Collins Public Library (COL)
2341 Main St.
P.O. Box 470 (mailing)
Collins, NY 14034
716-532-5129

Concord

Concord Public Library (CON)
18 Chapel St.
P.O. Box 158 (mailing)
Springville, NY 14141
716-592-7742

Eden

Eden Library (EDN)
2901 East Church St.
Eden, NY 14057
716-992-4028

Elma

Elma Public Library (ELM)
1860 Bowen Rd.
Elma, NY 14059
716-652-2719

Grand Island

Grand Island Memorial Library (GRI)
1715 Bedell Rd.
Grand Island, NY 14072
716-773-7124

Hamburg

Hamburg Library (HAM)
102 Buffalo St.
Hamburg, NY 14075
716-649-4415

Lake Shore Branch (LSH)

S-4857 Lake Shore Rd.
Hamburg, NY 14075
716-627-3017

Lackawanna

Lackawanna Public Library (LCW)
560 Ridge Rd.
Lackawanna, NY 14218
716-823-0630

Lancaster

Lancaster Public Library (LNC)
5466 Broadway
Lancaster, NY 14086
716-683-1120

Marilla

Marilla Free Library (MAR)
11637 Bullis Rd.
Marilla, NY 14102
716-652-7449

North Collins

North Collins Memorial Library (NCO)
2095 School St.
P. O. Box 730 (mailing)
North Collins, NY 14111
716-337-3211

Orchard Park

Orchard Park Public Library (OPK)
S-4570 South Buffalo St.
Orchard Park, NY 14127
716-662-9851

City of Tonawanda

City of Tonawanda Public Library (TON)
333 Main St.
Tonawanda, NY 14150
716-693-5043

Town of Tonawanda

Kenmore Branch (KNM)
160 Delaware Rd.
Kenmore, NY 14217
716-873-2842

Kenilworth Branch (KNL)

318 Montrose
Buffalo, NY 14223
716-834-7657

West Seneca

West Seneca Public Library (WSE)

1300 Union Rd.

West Seneca, NY 14224

716-674-2928

INSTRUCTIONS FOR SOURCE STANDARD INSURANCE CERTIFICATE

- I. Insurance shall be procured and certificates delivered before commencement of work or delivery of merchandise or equipment.
- II. CERTIFICATES OF INSURANCE
- A. Shall be made to the "Buffalo & Erie County Public Library, Business Office, 1 Lafayette Square, Buffalo, NY 14203"
- B. Coverage must comply with all specifications of the contract.
- C. Must be executed by an insurance company, agency or broker, which is licensed by the Insurance Department of the State of New York. If executed by a broker, notarized copy of authorization to bind or certify coverage must be attached.
- III. Forward the completed certificate to: Buffalo & Erie County Public Library (B&ECPL) for construction, purchase, lease or service.
- IV. Minimum coverage with limits are as follows:

Vendor Classification	A Construction and Maintenance	B Purchase or Lease of Merchandise or Equipment	C Professional Services	D Property Leased To Others Or Use Of Facilities Or Grounds	E Concessionaires Services	F Livery Services	G All Purposes Public Entity Contracts
Commercial Gen. Liab.	\$1,000,000 per occ.	\$1,000,000 CSL	\$1,000,000 CSL	\$1,000,000	\$1,000,000 CSL	\$1,000,000	\$1,000,000 CSL
General Aggregate	\$2,000,000	\$2,000,000	\$2,000,000	\$2,000,000	\$2,000,000	\$2,000,000	\$2,000,000
Products Completed Operations Liability	\$2,000,000	\$2,000,000	\$2,000,000	\$2,000,000	\$2,000,000	\$2,000,000	\$2,000,000
Blanket Broad Form Contractual Liability	INCLUDE						
Contractual Liability		INCLUDE	INCLUDE	INCLUDE	INCLUDE	INCLUDE	INCLUDE
Broad Form P.D.	INCLUDE						
X.C.U. (explosion, collapse, Underground)	INCLUDE						
Liquor Law				INCLUDE	INCLUDE		
Auto Liab.	\$1,000,000 CSL		\$1,000,000 CSL	\$1,000,000 CSL	\$1,000,000 CSL	\$1,000,000 CSL	\$1,000,000 CSL
Owned	INCLUDE		INCLUDE	INCLUDE	INCLUDE	INCLUDE	INCLUDE
Hired	INCLUDE		INCLUDE	INCLUDE	INCLUDE	INCLUDE	INCLUDE
Non-Owned	INCLUDE		INCLUDE	INCLUDE	INCLUDE	INCLUDE	INCLUDE
Excess/Umbrella Liab.	\$5,000,000	\$1,000,000	\$1,000,000	\$1,000,000	\$1,000,000	\$5,000,000	\$1,000,000
Worker's Compensation & Employer's Liability	STATUTORY	STATUTORY	STATUTORY	STATUTORY	STATUTORY	STATUTORY	STATUTORY
Disability Benefits	STATUTORY	STATUTORY	STATUTORY	STATUTORY	STATUTORY	STATUTORY	STATUTORY
Professional Liability			\$5,000,000				
Buffalo & Erie County Public Library, To Be Named Add'l Insd.	Gen. Liab., Auto Liab., & Excess	Broad Form Vendors May Be Required	Gen. Liab., Auto Liab., & Excess	Gen. Liab., Auto Liab., & Excess	Gen. Liab., Auto Liab., & Excess	Gen. Liab., Auto Liab., & Excess	Gen. Liab., Auto Liab., & Excess

- V. Construction contracts require excess Umbrella Liability limits of \$5,000,000.
- VI Coverage must be provided on a primary-non contributory bases.
- VII. Designated Construction Project - General Aggregate Limit, Per Project Endorsement CG 25 03 is required.
- VIII. In the event the concessionaire is required to have a N.Y.S. license to dispense alcoholic beverages an endorsement for liquor liability is required.
- IX. Waiver of Subrogation: Required on all lines unless noted
- X Transportation of people in buses, vans or station wagons requires \$5,000,000 excess liability.
- XI. Workers Compensation: State Workers' Compensation / Disability Benefits Law
Use Applicable Certificates Below:

Workers Compensation Forms

CE-200	Exemption
C105.2	Commercial Insurer
SI-12	Self Insurer
GSI-105.2	Group Self Insured
U-26.3	New York State Insurance Fund

DBL (Disability Benefits Law) Forms

CE-200	Exemption
DB-120.1	Insurers
DB-155	Self Insured

- XII. The "ACORD" form certificate may be used in place of the B&ECPL Standard Insurance Certificate, provided that all of the above referenced requirements are incorporated into the "ACORD" form certificate.

Appendix F

Name	Manufacturer	Serial	Location
HP LASERJET ENTERPRISE 500 COLOR PRINTER	HP	JPCCDL05S	ALD
STAR THERMAL PRINTER	STAR	2230012030600133	ALD
STAR THERMAL PRINTER	STAR	2230012030600130	ALD
STAR THERMAL PRINTER	STAR	2400112030603367	ALD
HP LASERJET ENTERPRISE 500 COLOR PRINTER	HP	JPCCDL066	ANG
STAR THERMAL PRINTER	STAR	2230012010601036	ANG
STAR THERMAL PRINTER	STAR	2230012010600992	ANG
STAR THERMAL PRINTER	STAR	2400114080604978	ANG
HP COLOR LASERJET PRO MFP M277DW	HP	VNBKK6WDH6	AUD
HP COLOR LASERJET PRO MFP M283fdw PRINTER	HP	VNBRQCL11Y	AUD
HP COLOR LASERJET PRO MFP M283fdw PRINTER	HP	VNBRQCN010	AUD
HP LASERJET ENTERPRISE 500 COLOR PRINTER	HP	CNDCG5Q09Z	AUD
HP LASERJET ENTERPRISE M553dn COLOR PRINTER	HP	JPCCM1R0QZ	AUD
HP LASERJET ENTERPRISE M553dn COLOR PRINTER	HP		AUD
PRINTER	HP	SG8111X0DM	AUD
PRINTER HP DESKJET 6122	HP	MY28S1B26G	AUD
PRINTER HP DESKJET 6940	HP	MY02JCK1N3	AUD
PRINTER HP DESKJET 952C	HP	MY06K180KT	AUD
PRINTER HP LASERJET 4050N	HP	USMB268191	AUD
STAR THERMAL PRINTER	STAR	2230011100600025	AUD
STAR THERMAL PRINTER	STAR	2230011100600856	AUD
STAR THERMAL PRINTER	STAR	2230014070601741	AUD
STAR THERMAL PRINTER	STAR	2230014070601742	AUD
STAR THERMAL PRINTER	STAR	2400110090608462	AUD
STAR THERMAL PRINTER	STAR	2400110060600415	AUD
STAR THERMAL PRINTER	STAR	24001100600332	AUD
STAR THERMAL PRINTER	STAR	2400110060600359	AUD
STAR THERMAL PRINTER	STAR	2230011040602238	AUD
STAR THERMAL PRINTER	STAR	2230011040602239	AUD
STAR THERMAL PRINTER	STAR	2230011040602245	AUD
STAR THERMAL PRINTER	STAR	2230011100600024	AUD
HP LASERJET ENTERPRISE 500 COLOR PRINTER	HP	JPCCDL06F	BOS
STAR THERMAL PRINTER	STAR	2230012030600072	BOS
STAR THERMAL PRINTER	STAR	2230012110601243	BOS
STAR THERMAL PRINTER	STAR	2400112100600851	BOS
HP LASERJET ENTERPRISE 500 COLOR PRINTER	HP	JPCCDL06B	CFD
PRINTER HP DESKJET 950A	HP	MX11K1F13R	CFD
STAR THERMAL PRINTER	STAR	2400112010600384	CFD
STAR THERMAL PRINTER	STAR		CFD
STAR THERMAL PRINTER	STAR	2230011100600040	CFD
STAR THERMAL PRINTER	STAR	2400110080600378	CFD
STAR THERMAL PRINTER	STAR	2400110080600353	CFD
STAR THERMAL PRINTER	STAR	2230011040602228	CFD
STAR THERMAL PRINTER	STAR	2230011100600021	CFD
STAR THERMAL PRINTER	STAR	2230011100600027	CFD
STAR THERMAL PRINTER	STAR	2230011100600045	CFD
DELL 3130cn COLOR LASER PRINTER	DELL	1LYNQF1	CLA
HP LASERJET 4050N	HP	USBC000918	CLA
HP LASERJET ENTERPRISE M555dn COLOR PRINTER	HP	JPBCR1S01H	CLA
PRINTER HP LASERJET 6P	HP	USCD041045	CLA

STAR THERMAL PRINTER	STAR	2230012030600129	CLA
STAR THERMAL PRINTER	STAR	2230012030600106	CLA
STAR THERMAL PRINTER	STAR	2400111090603819	CLA
STAR THERMAL PRINTER	STAR	2400111090603820	CLA
STAR THERMAL PRINTER	STAR	2400111090603779	CLA
STAR THERMAL PRINTER	STAR	2400111090603799	CLA
STAR THERMAL PRINTER	STAR	2230014070601855	CLA
HP LASERJET ENTERPRISE 500 COLOR PRINTER	HP	CNDCG9Q21Y	CLS
PRINTER HP LASERJET 4050TN	HP	USQJ016885	CLS
STAR THERMAL PRINTER	STAR	230090803627	CLS
STAR THERMAL PRINTER	STAR	2230011100600041	CLS
STAR THERMAL PRINTER	STAR	2230011100600037	CLS
STAR THERMAL PRINTER	STAR	2230012110601224	CLS
4" TT DESKTOP LABEL PRINTER	BAYSCAN TEI	T4519141636	CNT
4" TT DESKTOP LABEL PRINTER	BAYSCAN TEI	T4519230205	CNT
4" TT DESKTOP LABEL PRINTER	BAYSCAN TEI	T4519230204	CNT
4" TT DESKTOP LABEL PRINTER	BAYSCAN TEI	T4519230203	CNT
BROTHER HL-L3270CDW PRINTER	BROTHER	U65176M2N895303	CNT
DELL WORKGROUP LASER PRINTER	DELL	5L3J4B1	CNT
EPSON TM-U200PD	EPSON	F7AG228433	CNT
HP 4000TN	HP	USEF198237	CNT
HP COLOR LASER CP2025x PRINTER	HP	CNGS452746	CNT
HP COLOR LASER CP2025x PRINTER	HP	CNGS393636	CNT
HP COLOR LASERJET PRO M283fdw WIFI PRINTER	HP	VNBKN1722D	CNT
HP COLOR LASERJET PRO M283fdw WIRELESS ALL-IN-ONE	HP	VNBRN8V1SF	CNT
HP COLOR LASERJET PRO M283fdw WIRELESS ALL-IN-ONE	HP	VNBRP2199Z	CNT
HP COLOR LASERJET PRO MFP M283fdw PRINTER	HP		CNT
HP COLOR LASERJET PRO MFP M283fdw PRINTER	HP	VNBRR211XK	CNT
HP COLOR LASERJET PRO MFP M283fdw PRINTER	HP	VNBRR55B6Y	CNT
HP COLOR LASERJET PRO MFP M476dn PRINTER	HP	CNB8G220B3	CNT
HP DESIGNJET z2100 44in PRINTER	HP	MY9BN1C038	CNT
HP DesignJet Z6dr 44in	HP	CN9637K00X	CNT
HP DESKJET 540 PRINTER	HP	SG51E13221	CNT
HP LASERJET 4000T PRINTER	HP	USNC023938	CNT
HP LaserJet 4000T PRINTER	HP	USNC090723	CNT
HP LASERJET ENTERPRISE 500 COLOR PRINTER	HP	CNDCG8B1PS	CNT
HP LASERJET ENTERPRISE 500 COLOR PRINTER	HP	CNCCF1F0TX	CNT
HP LASERJET ENTERPRISE 500 COLOR PRINTER	HP	CNCCF1F14R	CNT
HP LASERJET ENTERPRISE 500 COLOR PRINTER	HP	CNCCF1F155	CNT
HP LASERJET ENTERPRISE 500 COLOR PRINTER	HP	CNCCF330TB	CNT
HP LASERJET ENTERPRISE M406dn PRINTER	HP	PHBBG21365	CNT
HP LASERJET ENTERPRISE M406dn PRINTER	HP	PHBBG21359	CNT
HP LASERJET ENTERPRISE M553dn COLOR PRINTER	HP	JPCCN2C01P	CNT
HP LASERJET ENTERPRISE M553dn COLOR PRINTER	HP	JPBCHC419T	CNT
HP LASERJET ENTERPRISE M553dn COLOR PRINTER	HP	JPCCN2C01P	CNT
HP LASERJET ENTERPRISE M553dn COLOR PRINTER	HP	JPBCJ1312Z	CNT
HP LASERJET ENTERPRISE M553dn COLOR PRINTER	HP	JPBCJ29062	CNT
HP LASERJET ENTERPRISE M553dn COLOR PRINTER	HP	JPBCJ4T099	CNT
HP LASERJET ENTERPRISE M553dn COLOR PRINTER	HP	BRBSJ5WQZD	CNT
HP LASERJET ENTERPRISE M553dn COLOR PRINTER	HP	JPBCK520VD	CNT
HP LASERJET ENTERPRISE M553dn COLOR PRINTER	HP	JPBCK5L01F	CNT
HP LASERJET ENTERPRISE M553dn COLOR PRINTER	HP	JPBCKCH11K	CNT

HP LASERJET ENTERPRISE M553dn COLOR PRINTER	HP	CNBCH720JM	CNT
HP LASERJET ENTERPRISE M554dn COLOR PRINTER	HP	JPBCND72DN	CNT
HP LASERJET ENTERPRISE M554dn COLOR PRINTER	HP	JPBC15PGF7	CNT
HP LASERJET ENTERPRISE M554dn COLOR PRINTER	HP	JPBC16NGB0	CNT
HP LASERJET ENTERPRISE M554dn COLOR PRINTER	HP		CNT
HP LASERJET ENTERPRISE M555dn COLOR PRINTER	HP	JPBCQ670Z5	CNT
HP LASERJET ENTERPRISE M555dn COLOR PRINTER	HP	JPDCQ8408W	CNT
HP LASERJET ENTERPRISE M555dn COLOR PRINTER	HP	JPBCQ86091	CNT
HP LASERJET ENTERPRISE M555dn COLOR PRINTER	HP	JPBCQ9T0TH	CNT
HP LASERJET PRO M477fdw COLOR PRINTER	HP	VNB8K4B1VL	CNT
HP OFFICEJET 3830 ALL-IN-ONE WIFI PRINTER	HP	CN8344Q3JZ	CNT
LULZBOT TAZ 3D PRINTER	Lulzbot	KT-PR0041NA-21044	CNT
MAKERBOT 3D REPLICATOR 5TH GENERATION	MAKERBOT	R50021789	CNT
MAKERBOT 3D REPLICATOR MINI PRINTER	MAKERBOT	M50004610	CNT
PRINTER	HP		CNT
PRINTER	HP	MY94A1B0R8	CNT
PRINTER STAR MICRONICS THERMAL RECEIPT PRIN	STAR	2400110080605751	CNT
PRINTER STAR MULTIFONT		510020831767	CNT
PRINTER STAR THERMAL PRINTER	STAR		CNT
PRINTER STAR THERMAL PRINTER	STAR		CNT
PRINTER STAR THERMAL PRINTER	STAR	2230011100600044	CNT
PRINTER STAR THERMAL PRINTER	STAR	2230011100600005	CNT
PRINTER STAR THERMAL PRINTER	STAR	2230011100600022	CNT
PRINTER TANDY DMP 2000 PRINTER	TANDY	3T14855	CNT
PRINTER Z APPLE IMAGEWRITER II	APPLE	2265755	CNT
STAR THERMAL PRINTER	STAR	2230012030600085	CNT
STAR THERMAL PRINTER	STAR	2230011100600941	CNT
STAR THERMAL PRINTER	STAR	2230012030600111	CNT
STAR THERMAL PRINTER	STAR	2230011040602229	CNT
STAR THERMAL PRINTER	STAR	2230012030600161	CNT
STAR THERMAL PRINTER	STAR	2230015110601331	CNT
STAR THERMAL PRINTER	STAR	2230013110603955	CNT
STAR THERMAL PRINTER	STAR	2230012010600894	CNT
STAR THERMAL PRINTER	STAR	2230011100600003	CNT
STAR THERMAL PRINTER	STAR	2230013110603966	CNT
STAR THERMAL PRINTER	STAR	2400112010601172	CNT
STAR THERMAL PRINTER	STAR	2230010120600666	CNT
STAR THERMAL PRINTER	STAR	2230011040602236	CNT
STAR THERMAL PRINTER	STAR	2230013110603967	CNT
STAR THERMAL PRINTER	STAR	2400112010600407	CNT
STAR THERMAL PRINTER	STAR	230090803551	CNT
STAR THERMAL PRINTER	STAR	2230013120600005	CNT
STAR THERMAL PRINTER	STAR	2400112010600421	CNT
STAR THERMAL PRINTER	STAR	2400114030602183	CNT
STAR THERMAL PRINTER	STAR	2400112010600426	CNT
STAR THERMAL PRINTER	STAR	2230011040602260	CNT
STAR THERMAL PRINTER	STAR	2230011040602265	CNT
STAR THERMAL PRINTER	STAR	2400110080600354	CNT
STAR THERMAL PRINTER	STAR	2230014070601750	CNT
STAR THERMAL PRINTER	STAR	2230012110601347	CNT
STAR THERMAL PRINTER	STAR	2230011040602320	CNT
STAR THERMAL PRINTER	STAR	2230014070601752	CNT

STAR THERMAL PRINTER	STAR	2230012110601343	CNT
STAR THERMAL PRINTER	STAR	2230011100600004	CNT
STAR THERMAL PRINTER	STAR	2230014070601799	CNT
STAR THERMAL PRINTER	STAR	2230012110601321	CNT
STAR THERMAL PRINTER	STAR	2230011100600008	CNT
STAR THERMAL PRINTER	STAR	2230012110601265	CNT
STAR THERMAL PRINTER	STAR	2230011100600014	CNT
STAR THERMAL PRINTER	STAR	2230014070601828	CNT
STAR THERMAL PRINTER	STAR	2230012110601336	CNT
STAR THERMAL PRINTER	STAR	2230011040602469	CNT
STAR THERMAL PRINTER	STAR	2230011100600002	CNT
STAR THERMAL PRINTER	STAR	2230014070601834	CNT
STAR THERMAL PRINTER	STAR	2230012110601245	CNT
STAR THERMAL PRINTER	STAR	2230011100600001	CNT
STAR THERMAL PRINTER	STAR	2230016090600648	CNT
STAR THERMAL PRINTER	STAR	2230014070601872	CNT
STAR THERMAL PRINTER	STAR	2230012110601372	CNT
STAR THERMAL PRINTER	STAR	2230011100600006	CNT
STAR THERMAL PRINTER	STAR	2230016090600649	CNT
STAR THERMAL PRINTER	STAR	2230011100600015	CNT
STAR THERMAL PRINTER	STAR	2230014070601875	CNT
STAR THERMAL PRINTER	STAR	2230011040602280	CNT
STAR THERMAL PRINTER	STAR	2550618081100781	CNT
STAR THERMAL PRINTER	STAR	2230011100600035	CNT
STAR THERMAL PRINTER	STAR	2230011100600034	CNT
STAR THERMAL PRINTER	STAR	22300016090600649	CNT
STAR THERMAL PRINTER	STAR	2400112010600404	CNT
STAR THERMAL PRINTER	STAR	2230011100600047	CNT
STAR THERMAL PRINTER	STAR	2230012030600112	CNT
STAR THERMAL PRINTER	STAR	2230011100600016	CNT
STAR THERMAL PRINTER	STAR	2230012030600089	CNT
STAR THERMAL PRINTER	STAR	2230011100600850	CNT
STAR THERMAL PRINTER	STAR		CNT
HP LASERJET ENTERPRISE 500 COLOR PRINTER	HP	CNBCD9K006	COL
PRINTER EPSON 845 WORKFORCE ALL-IN-ONE	EPSON	PKFY150943	COL
STAR THERMAL PRINTER	STAR	2230012110601328	COL
STAR THERMAL PRINTER	STAR	2230012110601233	COL
STAR THERMAL PRINTER	STAR	2400114030602096	COL
STAR THERMAL PRINTER	STAR	2400114030602168	COL
HP LASERJET ENTERPRISE 500 COLOR PRINTER	HP	CNCCF9S0XT	CON
STAR THERMAL PRINTER	STAR	2230012110601361	CON
STAR THERMAL PRINTER	STAR	2230012110601242	CON
STAR THERMAL PRINTER	STAR	2400114030602100	CON
STAR THERMAL PRINTER	STAR	2230012110601373	CON
HP LASERJET ENTERPRISE 500 COLOR PRINTER	HP	CNCCF1K2LW	CRA
STAR THERMAL PRINTER	STAR	2300812030379	CRA
STAR THERMAL PRINTER	STAR	2230011040602235	CRA
STAR THERMAL PRINTER	STAR	2230011040602231	CRA
HP LASERJET 4050N	HP	USBC045429	DUD
HP LASERJET ENTERPRISE 500 COLOR PRINTER	HP	CNDCG9Q21J	DUD
STAR THERMAL PRINTER	STAR	230090803540	DUD
STAR THERMAL PRINTER	STAR	2230011100600029	DUD

STAR THERMAL PRINTER	STAR	2230011100600013	DUD
STAR THERMAL PRINTER	STAR	2400112010600402	DUD
STAR THERMAL PRINTER	STAR	2230012110601252	DUD
HP LASERJET ENTERPRISE M555dn COLOR PRINTER	HP	JPBCQ4S02N	EAU
PRINTER STAR MICRONICS THERMAL RECEIPT PRIN	STAR	24001	EAU
STAR THERMAL PRINTER	STAR	2400110090600391	EAU
STAR THERMAL PRINTER	STAR	2230011040602470	EAU
STAR THERMAL PRINTER	STAR	2230011100600010	EAU
STAR THERMAL PRINTER	STAR	2230011100600011	EAU
STAR THERMAL PRINTER	STAR	2230011100600043	EAU
STAR THERMAL PRINTER	STAR	2400110090600441	EAU
HP LASERJET ENTERPRISE 500 COLOR PRINTER	HP	CNDCG9Q21M	ECL
PRINTER HP LASERJET 4050TN	HP	USCC178839	ECL
STAR THERMAL PRINTER	STAR	230090806551P	ECL
STAR THERMAL PRINTER	STAR	2230011100600017	ECL
STAR THERMAL PRINTER	STAR	2230012030600102	ECL
STAR THERMAL PRINTER	STAR	2230012110601371	ECL
HP LASERJET 4100N PRINTER	HP	USJNJ21525	EDN
HP LASERJET ENTERPRISE 500 COLOR PRINTER	HP	CNCCF2G1R6	EDN
STAR THERMAL PRINTER	STAR	2400113120702124	EDN
STAR THERMAL PRINTER	STAR	2230014070601926	EDN
HP LASERJET ENTERPRISE 500 COLOR PRINTER	HP	CNDCG5Q0B8	EGG
PRINTER HP DESKJET 895CXI	HP	MY98P1B1P5	EGG
PRINTER STAR MICRONICS THERMAL RECEIPT PRIN	STAR	2400110080600374	EGG
STAR THERMAL PRINTER	STAR	2230011040602234	EGG
STAR THERMAL PRINTER	STAR	2230011040602237	EGG
STAR THERMAL PRINTER	STAR	2230011040602300	EGG
STAR THERMAL PRINTER	STAR	2230013110603971	EGG
STAR THERMAL PRINTER	STAR	2230014070601775	EGG
HP LASERJET 6P PRINTER	HP	USCD105508	ELM
HP LASERJET ENTERPRISE 500 COLOR PRINTER	HP	CNCCF1FOLD	ELM
PRINTER HP DESKJET 720C	HP	US79M1Q1G2	ELM
STAR THERMAL PRINTER	STAR	2230010100601442	ELM
STAR THERMAL PRINTER	STAR	2230010100601482	ELM
STAR THERMAL PRINTER	STAR	2230012030600081	ELM
HP LASERJET ENTERPRISE 500 COLOR PRINTER	HP	CNCCF9S0X7	GRI
PRINTER HP LASERJET 4050N	HP	USBB004105	GRI
STAR THERMAL PRINTER	STAR	2230012110601348	GRI
STAR THERMAL PRINTER	STAR	2230012110601269	GRI
STAR THERMAL PRINTER	STAR	2230012110601278	GRI
STAR THERMAL PRINTER	STAR	2400112090603648	GRI
STAR THERMAL PRINTER	STAR	2230014070601936	GRI
EPSON WORKFORCE WF-7710 MULTIFUNCTION PRINTER	EPSON	X45Q112182	HAM
HP LASERJET ENTERPRISE 500 COLOR PRINTER	HP	CNCCF3T1W2	HAM
PRINTER HP LASERJET 6L	HP	USHB537937	HAM
PRINTER HP LASERJET 6P	HP	USBD026136	HAM
STAR THERMAL PRINTER	STAR	2230012010601083	HAM
STAR THERMAL PRINTER	STAR	2230012010601046	HAM
STAR THERMAL PRINTER	STAR	2400114030602891	HAM
STAR THERMAL PRINTER	STAR	2400114030602897	HAM
STAR THERMAL PRINTER	STAR	2400114030602905	HAM
STAR THERMAL PRINTER	STAR	2230015110601326	HAM

HP LASERJET 6P PRINTER	HP	USCH022592	JBR
HP LASERJET ENTERPRISE M553dn COLOR PRINTER	HP	JPCCM1R0Q7	JBR
PRINTER HP CP2025dn COLOR LASER PRINTER	HP	CNGS327531	JBR
PRINTER HP DESKJET 895CXI	HP	MY9251B0WQ	JBR
PRINTER HP LASERJET 4050TN	HP	USQC086490	JBR
PRINTER HP LASERJET 6L	HP	USHB105959	JBR
STAR THERMAL PRINTER	STAR	2400112020604276	JBR
STAR THERMAL PRINTER	STAR	2400112050602524	JBR
STAR THERMAL PRINTER	STAR	2400112050602501	JBR
STAR THERMAL PRINTER	STAR	230091102033	JBR
STAR THERMAL PRINTER	STAR	230091102003	JBR
STAR THERMAL PRINTER	STAR	230091102001	JBR
STAR THERMAL PRINTER	STAR	2400112020604266	JBR
STAR THERMAL PRINTER	STAR	230091101998	JBR
STAR THERMAL PRINTER	STAR	2230012030600086	JBR
STAR THERMAL PRINTER	STAR	2230012030600073	JBR
STAR THERMAL PRINTER	STAR	2230012030600105	JBR
HP LASERJET ENTERPRISE 500 COLOR PRINTER	HP	CNCCF1F14P	KNL
PRINTER HP LASERJET 6P	HP	USCD075005	KNL
STAR THERMAL PRINTER	STAR	2230011100600873	KNL
STAR THERMAL PRINTER	STAR	2230012030600017	KNL
STAR THERMAL PRINTER	STAR	2230012030600104	KNL
STAR THERMAL PRINTER	STAR	2230012030600031	KNL
STAR THERMAL PRINTER	STAR	2400112030602213	KNL
STAR THERMAL PRINTER	STAR	2400111110601908	KNM
HP LASERJET ENTERPRISE 500 COLOR PRINTER	HP	JPCCDBL06Q	KNM
PRINTER HP LASERJET 4050N	HP	USBC000915	KNM
PRINTER HP LASERJET 4050N	HP	USBB106377	KNM
PRINTER HP LASERJET 6L	HP	USHB942720	KNM
PRINTER HP LASERJET 6L	HP	USHB216089	KNM
STAR THERMAL PRINTER	STAR	2230011040602489	KNM
STAR THERMAL PRINTER	STAR	2230011100600863	KNM
STAR THERMAL PRINTER	STAR	2230011100600926	KNM
STAR THERMAL PRINTER	STAR	2230011100600953	KNM
STAR THERMAL PRINTER	STAR	2230012030600090	KNM
STAR THERMAL PRINTER	STAR	2230012030600108	KNM
STAR THERMAL PRINTER	STAR	2400112030602239	KNM
HP LASERJET 4000TN PRINTER	HP	USEF198242	LCW
HP LASERJET ENTERPRISE 500 COLOR PRINTER	HP	CNCCF9S0XH	LCW
PRINTER HP DeskJet 1000C	HP	MY31I3C0ZG	LCW
STAR THERMAL PRINTER	STAR	2230012030600084	LCW
STAR THERMAL PRINTER	STAR	2230012110601222	LCW
STAR THERMAL PRINTER	STAR	2400114080603255	LCW
STAR THERMAL PRINTER	STAR	2400114080603263	LCW
STAR THERMAL PRINTER	STAR	2400114080603350	LCW
HP LASERJET ENTERPRISE 500 COLOR PRINTER	HP	CNDCG5Q0B2	LNC
HP LASERJET ENTERPRISE M406dn PRINTER	HP	PHBBG41894	LNC
STAR THERMAL PRINTER	STAR	2400112010600883	LNC
STAR THERMAL PRINTER	STAR	2400112020609447	LNC
STAR THERMAL PRINTER	STAR	2400112010600885	LNC
STAR THERMAL PRINTER	STAR	2230016090602343	LNC
STAR THERMAL PRINTER	STAR	2230011100600950	LNC

STAR THERMAL PRINTER	STAR	2230011100600965	LNC
STAR THERMAL PRINTER	STAR	2230012030600103	LNC
HP LASERJET ENTERPRISE 500 COLOR PRINTER	HP	CNCCF3T1WC	LSH
PRINTER HP DESKJET 810C	HP	MY95131B0D3	LSH
STAR THERMAL PRINTER	STAR	2230012110601387	LSH
STAR THERMAL PRINTER	STAR	2230012110601327	LSH
STAR THERMAL PRINTER	STAR	2400112100600787	LSH
STAR THERMAL PRINTER	STAR	2400112100600831	LSH
HP LASERJET ENTERPRISE 500 COLOR PRINTER	HP	CNDCG9Q226	MAR
PRINTER STAR THERMAL PRINTER	STAR	2400112020601174	MAR
STAR THERMAL PRINTER	STAR	2230012030600132	MAR
STAR THERMAL PRINTER	STAR	2230012030600101	MAR
HP LASERJET 4050N	HP	USB000568	MRW
HP LASERJET ENTERPRISE 500 COLOR PRINTER	HP	CNCCF3T1YJ	MRW
STAR THERMAL PRINTER	STAR	230081201546	MRW
STAR THERMAL PRINTER	STAR	2230011040602232	MRW
STAR THERMAL PRINTER	STAR	2230011040602492	MRW
STAR THERMAL PRINTER	STAR	2230011100600030	MRW
STAR THERMAL PRINTER	STAR	2400112010600389	MRW
STAR THERMAL PRINTER	STAR	2230014070601880	MRW
HP LASERJET ENTERPRISE 500 COLOR PRINTER	HP	JPCCDBL06W	NCO
STAR THERMAL PRINTER	STAR	2230012030600083	NCO
STAR THERMAL PRINTER	STAR	2230012030600088	NCO
STAR THERMAL PRINTER	STAR	2400112100600281	NCO
HP LASERJET ENTERPRISE 500 COLOR PRINTER	HP	CNCCF9S0XN	NIA
PRINTER STAR THERMAL PRINTER	STAR	2230011100600835	NIA
PRINTER STAR THERMAL PRINTER	STAR	2400112010600425	NIA
STAR THERMAL PRINTER	STAR	230081203374P	NIA
STAR THERMAL PRINTER	STAR	2230011100600033	NIA
STAR THERMAL PRINTER	STAR	2230011100600020	NIA
STAR THERMAL PRINTER	STAR	2230012110601212	NIA
HP LASERJET 4050TN PRINTER	HP	USCC178807	NPK
HP LASERJET ENTERPRISE 500 COLOR PRINTER	HP	CNCCF770X6	NPK
STAR THERMAL PRINTER	STAR	230090900450	NPK
STAR THERMAL PRINTER	STAR	230081203038	NPK
STAR THERMAL PRINTER	STAR	2230011100600042	NPK
STAR THERMAL PRINTER	STAR	2230011040602230	NPK
STAR THERMAL PRINTER	STAR	2230012110601262	NPK
HP LASERJET ENTERPRISE 500 COLOR PRINTER	HP	CNCCF9S0WN	NST
PRINTER HP LASERJET 4050N	HP	USBC000769	NST
STAR THERMAL PRINTER	STAR	2230012020600019	NST
STAR THERMAL PRINTER	STAR	2400112100600264	NST
STAR THERMAL PRINTER	STAR	2400112100601490	NST
STAR THERMAL PRINTER	STAR	2400112100601381	NST
DELL 3130cn COLOR LASER PRINTER	DELL	9QJQCQM1	OPK
HP LASERJET ENTERPRISE 500 COLOR PRINTER	HP	CNDCG5Q0BT	OPK
PRINTER HP DESKJET F4480	HP	CN026C14PB	OPK
PRINTER HP DESKJET F4480	HP	CN026C14QK	OPK
STAR THERMAL PRINTER	STAR	2230011100600830	OPK
STAR THERMAL PRINTER	STAR	2230011100600838	OPK
STAR THERMAL PRINTER	STAR	2230011100600957	OPK
STAR THERMAL PRINTER	STAR	2230011100600974	OPK

STAR THERMAL PRINTER	STAR	2400110090603404	OPK
STAR THERMAL PRINTER	STAR	2400110090603455	OPK
STAR THERMAL PRINTER	STAR	2400110120600255	OPK
HP LASERJET ENTERPRISE 500 COLOR PRINTER	HP	CNCCF9S0XV	PAN
STAR THERMAL PRINTER	STAR	2400114070600994	PAN
HP LASERJET ENTERPRISE 500 COLOR PRINTER	HP	CNCCF1F14S	REI
HP LASERJET P2035n PRINTER	HP	CNB9R20290	REI
PRINTER HP LASERJET 4050N	HP	USBB098195	REI
PRINTER STAR THERMAL PRINTER	STAR	2230011100600932	REI
PRINTER STAR THERMAL PRINTER	STAR	2230011100600848	REI
PRINTER STAR THERMAL PRINTER	STAR	2230011100600858	REI
PRINTER STAR THERMAL PRINTER	STAR	2230011100600920	REI
STAR THERMAL PRINTER	STAR	2230012110601228	REI
STAR THERMAL PRINTER	STAR	2400111050600639	REI
STAR THERMAL PRINTER	STAR	2230011100600012	REI
STAR THERMAL PRINTER	STAR	2230011040602233	REI
HP LASERJET 4050N	HP	USBB106480	RIV
STAR THERMAL PRINTER	STAR	230080700574P	RIV
STAR THERMAL PRINTER	STAR	2230011100600019	RIV
STAR THERMAL PRINTER	STAR	2230011100600032	RIV
STAR THERMAL PRINTER	STAR		RIV
STAR THERMAL PRINTER	STAR	2230012110601221	RIV
HP LASERJET ENTERPRISE 500 COLOR PRINTER	HP	CNBCD9K005	TON
STAR THERMAL PRINTER	STAR	2230012030600015	TON
STAR THERMAL PRINTER	STAR	2230010120600700	TON
STAR THERMAL PRINTER	STAR	2230011110600954	TON
STAR THERMAL PRINTER	STAR	2230012030600109	TON
STAR THERMAL PRINTER	STAR	2230012030600055	TON
STAR THERMAL PRINTER	STAR	2230012110601332	TON
HP LASERJET ENTERPRISE 500 COLOR PRINTER	HP	CNCCF7702T	WIL
PRINTER HP LASERJET 4050N	HP	USRB036010	WIL
PRINTER LEXMARK X2350	LEXMARK	41171697495	WIL
STAR THERMAL PRINTER	STAR	2400110060600386	WIL
DELL WORKGROUP LASER PRINTER	DELL	JNDJ4B1	WSE
HP LASERJET ENTERPRISE 500 COLOR PRINTER	HP	CNCCF3T1YN	WSE
PRINTER STAR THERMAL PRINTER	STAR	2230011100600940	WSE
PRINTER STAR THERMAL PRINTER	STAR	2230011100600960	WSE
STAR THERMAL PRINTER	STAR	2400111050600614	WSE
STAR THERMAL PRINTER	STAR	2230011040602240	WSE
STAR THERMAL PRINTER	STAR	2230011040602279	WSE
STAR THERMAL PRINTER	STAR	2230011100600031	WSE
STAR THERMAL PRINTER	STAR	2230012110601370	WSE