


# Erie County Taxpayers



For every  
**\$1**



funded,  
the Buffalo &  
Erie County  
Public Library  
returns at least

**\$6.65**

in services

The  
Library...  
A Great  
Return on  
Your  
Investment

## Dollar value of your library service

**\$85,343,982**  
Materials Borrowed  
+  
**\$10,326,360**  
Computer Use  
+  
**\$1,036,668**  
Programs Attendance  
+  
**\$7,058,445**  
Reference  
Questions Asked  
+  
**\$43,631,325**  
Online Database  
Searches

**\$147,396,780**  
Comparative  
Retail Value

÷

**\$22,171,833**  
2010 Library  
Property Tax

=

**\$6.65**  
in services

### Q: How much money did Erie County residents save in 2010 by using Library services?

#### Borrowers Savings

**A: Over \$85,343,000!**

8,097,152 x \$10.54 = **\$85,343,982**  
Total Average Total savings  
circulation retail value\*

\* Estimated Retail Value of items from Maine State Library: [www.maine.gov/msl/services/calexplanation.htm](http://www.maine.gov/msl/services/calexplanation.htm), with the exception of: music downloads: estimated retail value for Apple iTunes Store: 69¢, 99¢ and \$1.29 each; and Audio Books: average price of Audio version of top 5 from NY Times best sellers on 6/5/2011.

#### Computer Use

**A: Over \$10,326,000!**

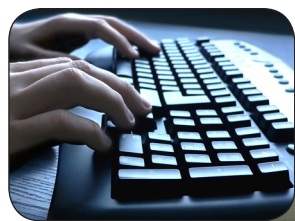
860,530 x \$12/hr = **\$10,326,360**  
Computer Average retail Total savings  
hours cost to reserve a computer

#### Online Databases

**A: Over \$43,631,000**

2,908,755 x \$15 = **\$43,631,325**  
Total # Average cost to Total savings  
of searches access articles online\*\*

\*\*Based on a sampling of costs to retrieve an article from fee-based websites.



#### Reference Questions & Interlibrary Loans

**A: Over \$7,058,000!**

470,563 x \$15 = **\$7,058,445**  
Questions Average cost Total Savings  
& loans per question/  
loan item

#### Program Attendance

**A: Over \$1 Million!**

Adult program attendance 51,437  
Average matinee movie \$10/adults

Children's program attendance +86,970  
Average matinee movie \$6/children  
Total program attendance 138,407

138,407 x \$7.49 = **\$1,036,668**  
Attendees Weighted Total Savings  
average

Buffalo & Erie County Public Libraries add to the quality of life in our great community. On an average day, more than 15,000 people use one of the 37 branches of the Library System. That accounts for nearly 4 million patron visits in 2010.

Libraries bring people and ideas together and are unique in their offerings. Libraries help to bridge the divide between those who have access to information and those who do not. With a free library card, residents of Erie County have free access to more than 3.4 million reading resources and reference materials including books, magazines, newspapers, e-content, DVDs, videos and more. The library website ([www.buffalolib.org](http://www.buffalolib.org)) provides 24/7 access to a world of exciting information.

The enclosed information quantifies the value of many of the FREE library services available to all.

[www.buffalolib.org](http://www.buffalolib.org)



8/11/11