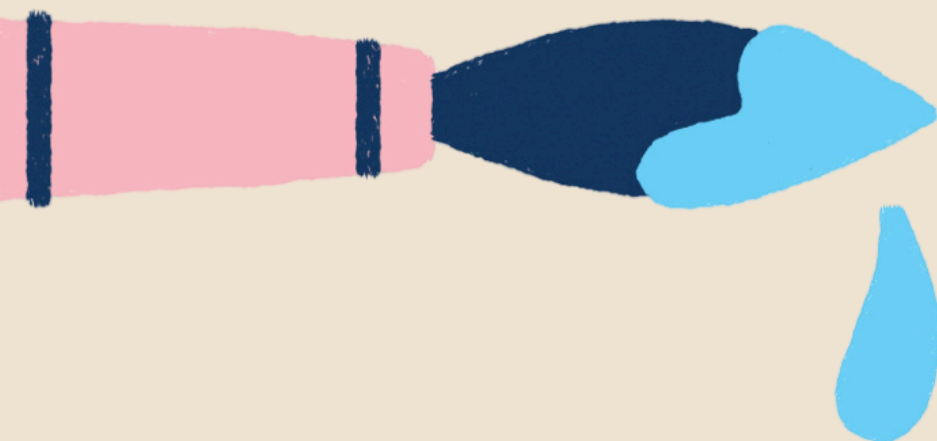


**Color Our World**



Clarence Public Library's Annual

# **Bike and wagon Raffle**

**Runs from**

**Saturday, June 28 - Friday, August**

**15. Drawing to be held August 16.**



- **Check out five children's books**
- **Bring your receipt to the main desk**
- **5 books=1 entry**
- **unlimited entries**

Thank you to the Friends of the  
Clarence Public Library for their  
support!

